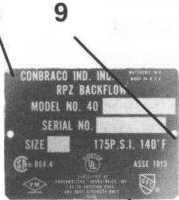
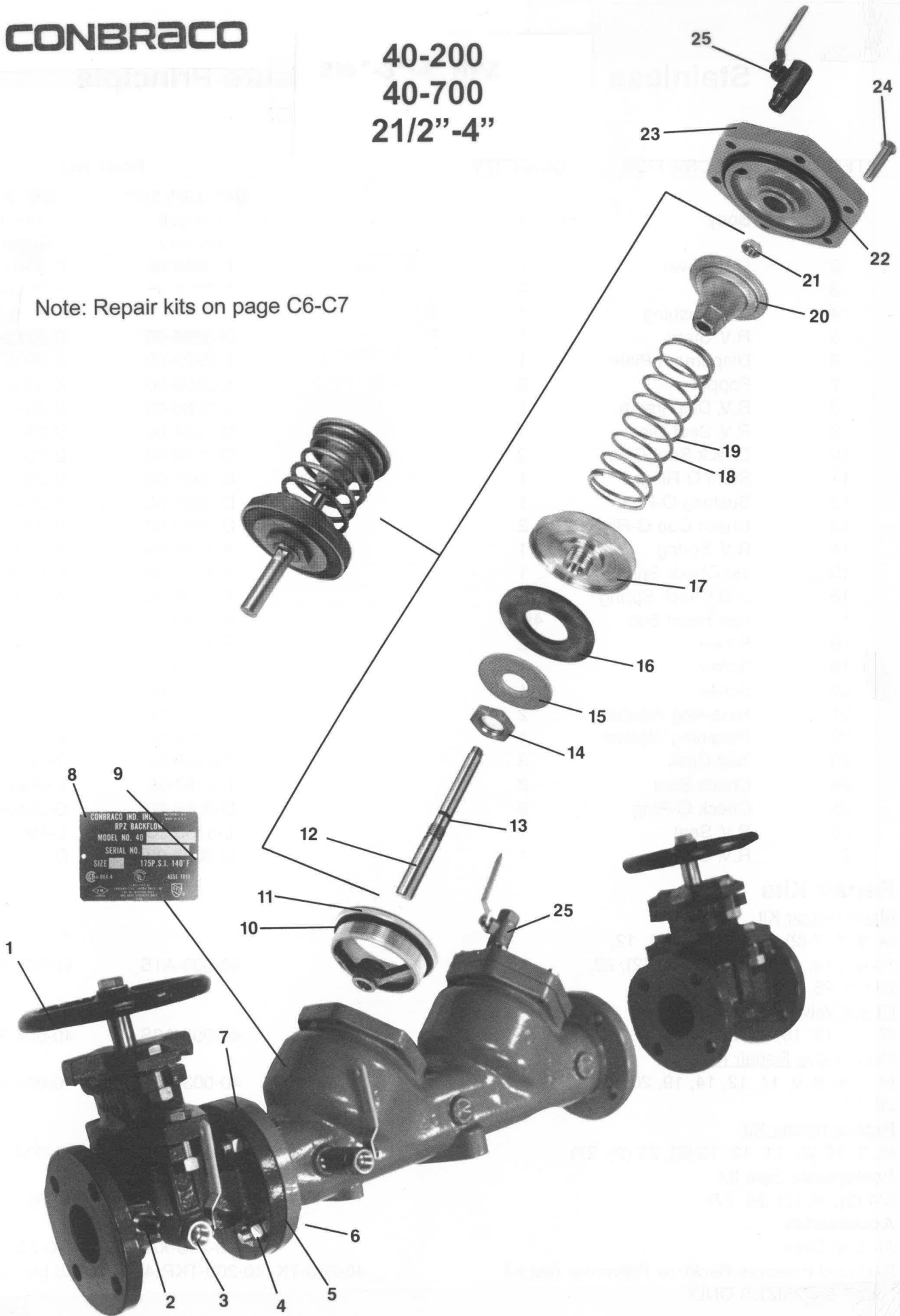
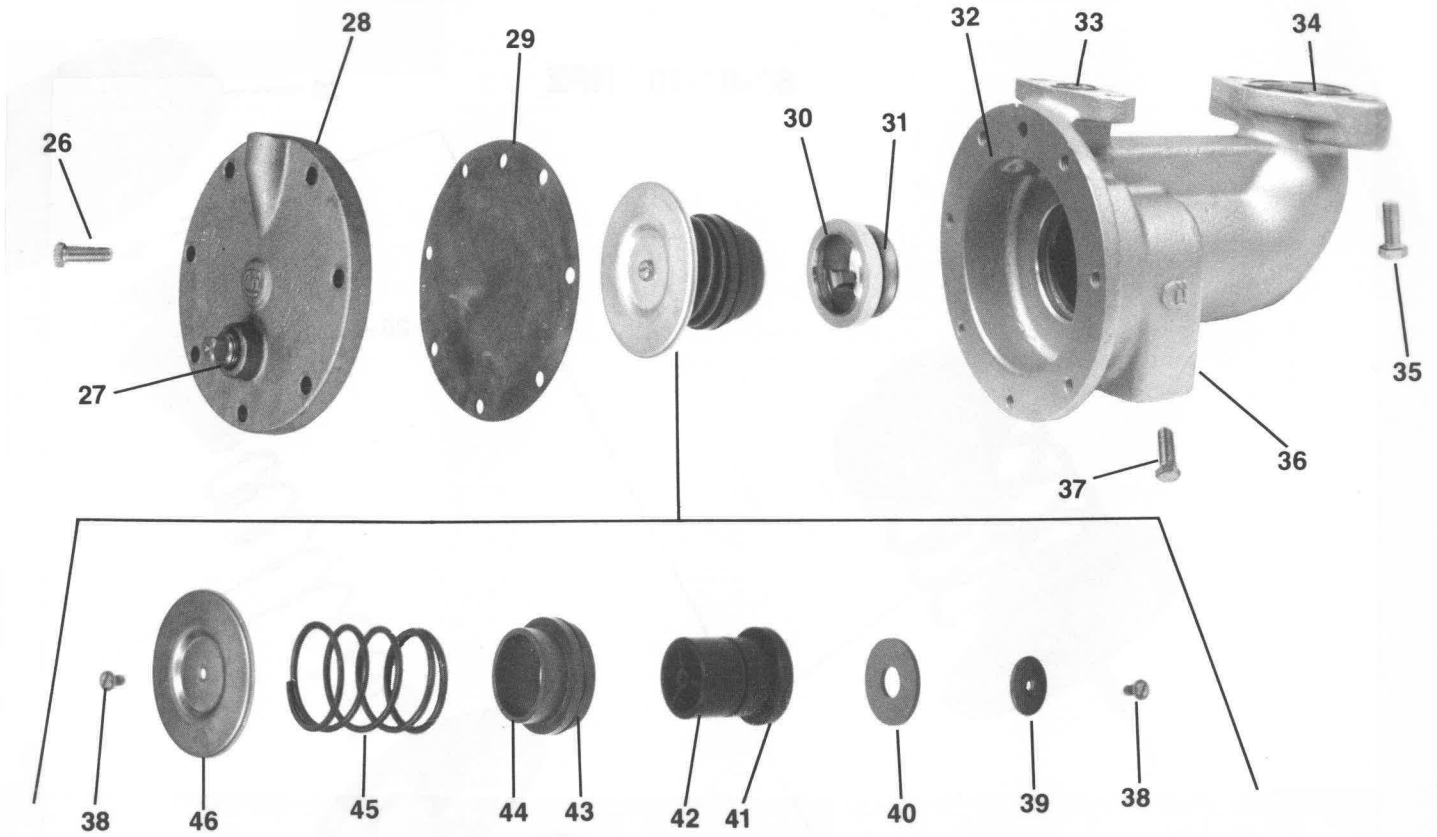


40-200
40-700
2 1/2" - 4"

Note: Repair kits on page C6-C7



40-200
40-700
2 1/2"-6"
Relief Valve



Note: Repair kits on page C7

RPZ Parts List

40-200
40-700

ITEM NO.	DESCRIPTION	QUANTITY	PART NO.		
			2-1/2"	3"	4"
1	Shut-Off Valve (OS&Y)	2	W-6789-00	W-6790-00	W-6824-00
1	Shut-Off Valve (NRS)	2	W-6785-00	W-6786-00	W-6743-00
2	Brass Nipple	1	K-3406-00	K-3406-00	K-3406-00
3	Testcock	1	70-103-01	70-103-01	70-103-01
4	Flange Nut	*	C-1691-00	C-1691-00	C-1691-00
5	Ring Gasket	2	D-2583-00	D-2584-00	D-2582-00
6	Flange Bolt	*	B-1804-00	B-1804-00	B-1828-00
7	Body	1	Q-4528-19	Q-4529-19	Q-4532-19
8	Nameplate	1	I-4406-00	I-4406-00	I-4406-00
9	Drive Screw	2	I-2613-00	I-2613-00	I-2613-00
10	C.V. Seat O-Ring	2	D-2567-00	D-2567-00	D-2573-00
11	C.V. Seat	2	L-4637-05	L-4637-05	L-4640-05
12	C.V. Stem	2	G-3239-06	G-3239-06	G-3242-06
13	C.V. Stem O-Ring	2	D-2561-00	D-2561-00	D-2561-00
14	Retainer Nut	2	C-1756-00	C-1756-00	C-1756-00
15	Retainer Washer	2	E-2199-00	E-2199-00	E-2204-00
16	C.V. Seat Disc	2	D-2560-00	D-2560-00	D-2572-00
17	Seat Disc Holder	2	F-3000-05	F-3000-05	F-3001-05
18	1st Check Spring	1	A-1740-00	A-1740-00	A-1743-00
19	2nd Check Spring	1	A-1741-00	A-1741-00	A-1744-00
20	Spring Retainer	2	E-2198-05	E-2198-05	E-2202-05
21	Jam Nut	2	C-1589-05	C-1589-05	C-1589-05
22	Cap O-Ring	2	D-2566-00	D-2566-00	D-2574-00
23	C.V. Cap	2	Q-4530-19	Q-4530-19	Q-4533-19
24	Cap Bolt	12	B-1797-00	B-1797-00	B-1801-00
25	Testcock	3	70-803-01	70-803-01	70-803-01
26	R.V. Cover Bolt	7	B-1796-00	B-1796-00	B-1796-00
27	1/2 NPT Plug	2	K-3008-00	K-3008-00	K-3008-00
28	R.V. Cover	1	Q-4531-05	Q-4531-05	Q-4531-05
29	R.V. Diaphragm	1	D-2564-00	D-2564-00	D-2564-00
30	R.V. Seat Ring	1	L-4638-05	L-4638-05	L-4638-05

RPZ Parts List

40-200
40-700

ITEM NO.	DESCRIPTION	QUANTITY	PART NO.		
			2-1/2"	3"	4"
31	R.V. Seat Ring O-Ring	1	D-2568-00	D-2568-00	D-2568-00
32	Relief Valve Body	1	Q-4535-05	Q-4535-05	Q-4535-05
33	SM. R.V. O-Ring	1	D-2570-00	D-2570-00	D-2570-00
34	LG. R.V. O-Ring	1	D-2571-00	D-2571-00	D-2571-00
35	R.V. Flange Bolt	2	B-1800-00	B-1800-00	B-1800-00
36	1/4 NPT Plug	1	K-3019-00	K-3019-00	K-3019-00
37	R.V. Flange Bolt	2	B-1792-00	B-1792-00	B-1792-00
38	Pan Head Screw	2	B-1753-00	B-1753-00	B-1753-00
39	R.V. Seat Washer	1	E-2200-00	E-2200-00	E-2200-00
40	R.V. Seat Disc	1	D-2563-00	D-2563-00	D-2563-00
41	R.V. Stem	1	G-3240-00	G-3240-00	G-3240-00
42	R.V. Stem O-Ring	1	D-2562-00	D-2562-00	D-2562-00
43	R.V. Bushing O-Ring	1	D-2565-00	D-2565-00	D-2565-00
44	R.V. Bushing	1	L-4639-15	L-4639-15	L-4639-15
45	R.V. Spring	1	A-1742-00	A-1742-00	A-1742-00
46	Diaphragm Plate	1	E-2201-00	E-2201-00	E-2201-00

* 2-1/2" & 3" QTY.=8 / 4" QTY.=16

Repair Kits

1st Check Valve Repair Kit (12, 13, 14, 15, 16, 17, 18, 20, 21, 22)	40-009-01	40-009-01	40-00A-01
2nd Check Valve Repair Kit (12, 13, 14, 15, 16, 17, 19, 20, 21, 22)	40-009-02	40-009-02	40-00A-02
Seat Repair Kit (10, 11, 22)	40-009-03	40-009-03	40-00A-03
Rubber Repair Kit (10, 13, 16, 22)	40-009-04	40-009-04	40-00A-04
Relief Valve Repair Kit (29, 30, 31, 33, 34, 38, 39, 40, 41, 42, 43, 44, 45, 46)	40-009-05	40-009-05	40-00A-05
Relief Valve Rubber Repair Kit (29, 31, 33, 34, 40, 42, 43)	40-009-06	40-009-06	40-00A-06

