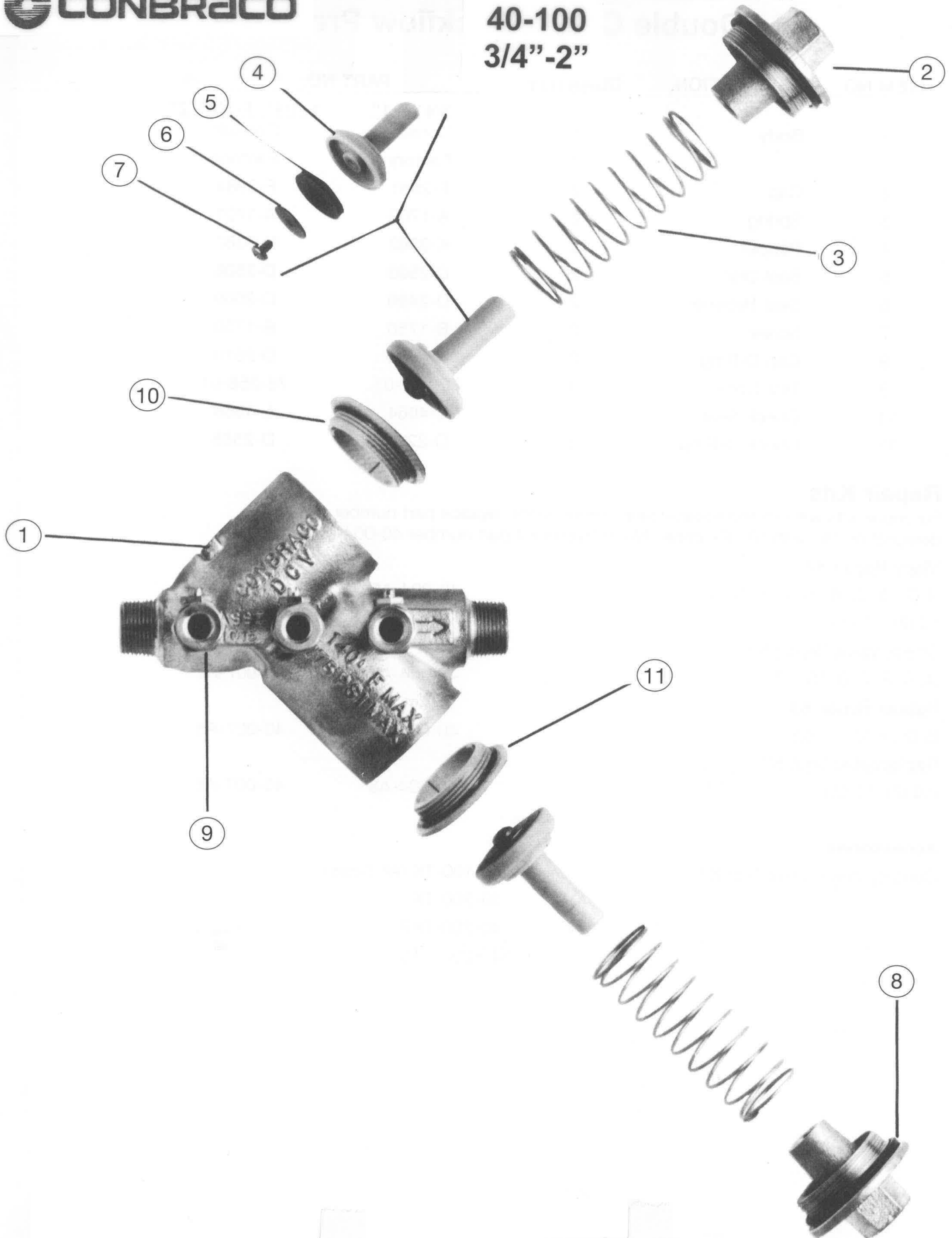


40-100  
3/4"-2"



# 40-100

ITEM NO.	DESCRIPTION	QUANTITY	PART NO.	
			<u>3/4" &amp; 1"</u>	<u>1-1/4", 1-1/2", 2"</u>
1	Body	1	Consult	Consult
			Factory	Factory
2	Cap	2	F-2981	F-2984
3	Spring	2	A-1700	A-1701
4	Poppet	2	K-3362	K-3367
5	Seat Disc	2	D-2503	D-2508
6	Seat Retainer	2	D-2499	D-2509
7	Screw	2	B-1750	B-1750
8	Cap O-Ring	2	D-2500	D-2510
9	Test Cock	3	78-257-01	78-258-01
10	Check Seat	2	L-4864	L-4866
11	Check O-Ring	2	D-2274	D-2565

## Repair Kits

For repair kits without replaceable seat components, replace part number suffix designation "A" with "0". Example, Major Repair Kit part number 40-004-05.

### Major Repair Kit

(4 (2), 5 (2), 6 (2), 7 (2), 8 (2),  
10 (2), 11 (2))

40-004-A5

40-007-A5

### Check Valve Repair Kit

(4, 5, 6, 7, 8, 10, 11)

40-004-A2

40-007-A2

### Rubber Repair Kit

(5 (2), 8 (2), 11 (2))

40-004-A6

40-007-A6

### Replaceable Seat Kit

(10 (2), 11 (2))

40-004-A8

40-007-A8