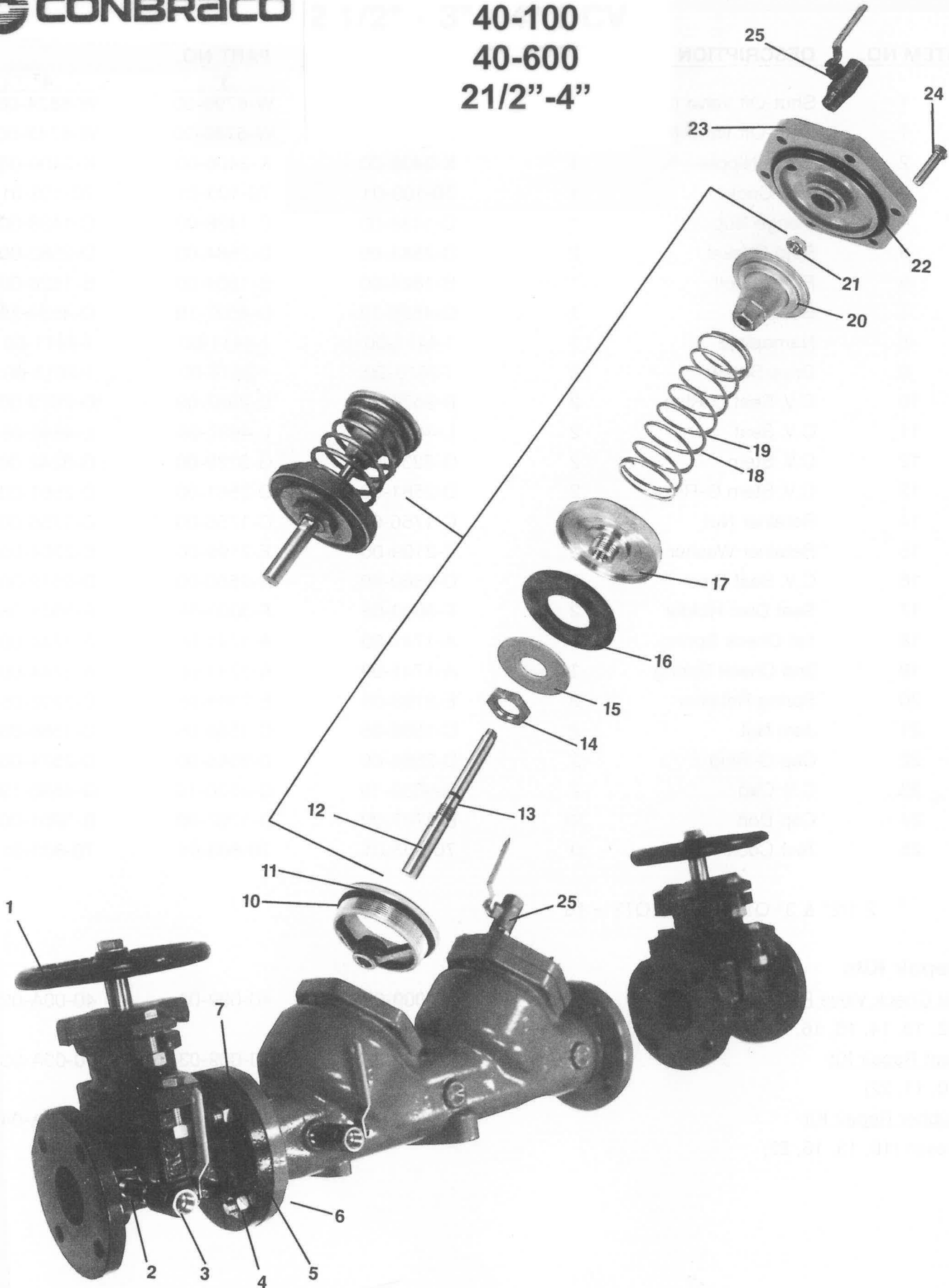


40-100
40-600
2 1/2" - 4"



40-100 40-600

ITEM NO.	DESCRIPTION	QUANTITY	PART NO.		
			2-1/2"	3"	4"
1	Shut-Off Valve (OS&Y)	2	W-6789-00	W-6790-00	W-6824-00
1	Shut-Off Valve (NRS)	2	W-6785-00	W-6786-00	W-6743-00
2	Brass Nipple	1	K-3406-00	K-3406-00	K-3406-00
3	Test Cock	1	70-103-01	70-103-01	70-103-01
4	Flange Nut	*	C-1438-00	C-1438-00	C-1438-00
5	Ring Gasket	2	D-2583-00	D-2584-00	D-2582-00
6	Flange Bolt	*	B-1804-00	B-1804-00	B-1828-00
7	Body	1	Q-4526-19	Q-4527-19	Q-4534-19
8	Nameplate	1	I-4411-00	I-4411-00	I-4411-00
9	Drive Screw	2	I-2613-00	I-2613-00	I-2613-00
10	C.V. Seat O-Ring	2	D-2576-00	D-2567-00	D-2573-00
11	C.V. Seat	2	L-4637-05	L-4637-05	L-4640-05
12	C.V. Stem	2	G-3239-06	G-3239-00	G-3242-00
13	C.V. Stem O-Ring	2	D-2561-00	D-2561-00	D-2561-00
14	Retainer Nut	2	C-1756-00	C-1756-00	C-1756-00
15	Retainer Washer	2	E-2199-00	E-2199-00	E-2204-00
16	C.V. Seat Disc	2	D-2560-00	D-2560-00	D-2572-00
17	Seat Disc Holder	2	F-3000-05	F-3000-05	F-3001-05
18	1st Check Spring	1	A-1741-00	A-1741-00	A-1744-00
19	2nd Check Spring	1	A-1741-00	A-1741-00	A-1744-00
20	Spring Retainer	2	E-2198-05	E-2198-05	E-2202-05
21	Jam Nut	2	C-1589-05	C-1589-05	C-1589-05
22	Cap O-Ring	2	D-2566-00	D-2566-00	D-2574-00
23	C.V. Cap	2	Q-4530-19	Q-4530-19	Q-4533-19
24	Cap Bolt	12	B-1797-00	B-1797-00	B-1801-00
25	Test Cock	3	70-803-01	70-803-01	70-803-01

* 2 1/2" & 3" QTY = 8 / 4" QTY = 16

Repair Kits

1st & 2nd Check Valve Repair Kit
(12, 13, 14, 15, 16, 17, 18, 20, 21, 22)

40-009-02

40-009-02

40-00A-02

Seat Repair Kit
(10, 11, 22)

40-009-03

40-009-03

40-00A-03

Rubber Repair Kit
2 each (10, 13, 16, 22)

40-009-04

40-009-04

40-00A-04

2 1/2-10" Seat Removal Tool Specifications

To assist in removing seats in 2-1/2" - 10" 40 series backflow preventers use schedule 40 pipe cut to the following dimensions.

<u>Seat Size</u>	<u>Type</u>	<u>Size</u>	<u>Length</u>	<u>No. Slots</u>	<u>Slot Width</u>	<u>Slot Depth</u>
2-1/2" & 3"	Check Valve	2"	8"	2	7/16"	5/8"
4	Check Valve	3"	10"	2	9/16"	3/4"
6	Check Valve	4"	13"	2	11/16"	3/4"
8	Check Valve	6"	16"	3	11/16"	7/8"
2-1/2" - 6"	Relief Valve	1-1/4"	8"	2	1/2"	1/2"
8" & 10"	Relief Valve	1-1/2"	8"	2	1/2"	1/2"

Slots to be equally apart.

Drill hole through other end of pipe to facilitate bar size used for handle.