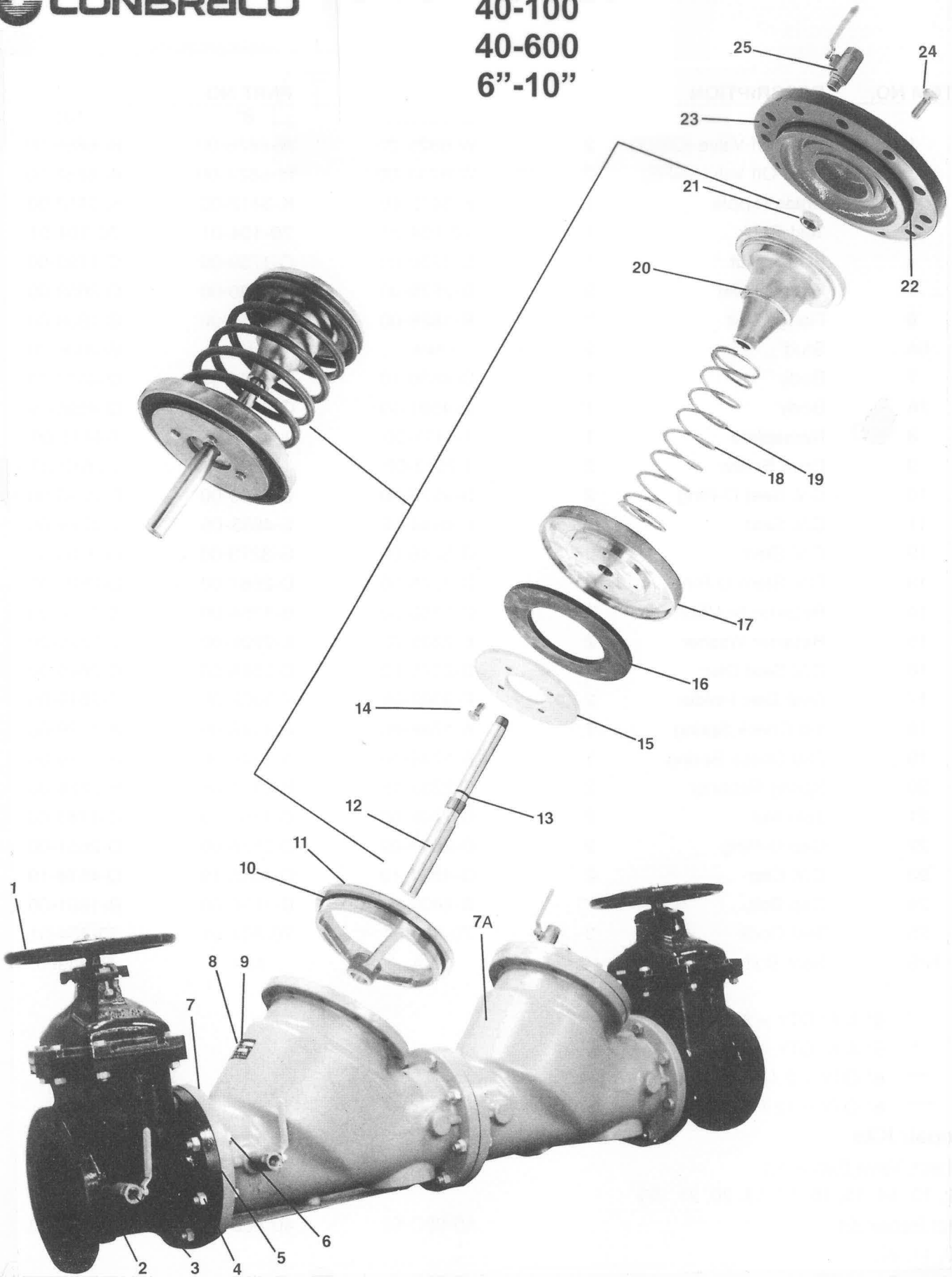


40-100  
40-600  
6"-10"



# 40-100 40-600

ITEM NO.	DESCRIPTION	QUANTITY	PART NO.		
			6"	8"	10"
1	Shut-Off Valve (OS&Y)	2	W-6825-00	W-6826-00	W-6859-00
1	Shut-Off Valve (NRS)	2	W-6744-00	W-6827-00	W-6858-00
2	Brass Nipple	1	K-3412-40	K-3412-00	K-3412-00
3	Test Cock	1	70-104-01	70-104-01	70-104-01
4	Flange Nut	*	C-1759-00	C-1759-00	C-1793-00
5	Ring Gasket	3	D-2579-00	D-2590-00	D-2653-00
6	Flange Bolt	**	B-1829-00	B-1857-00	B-1858-00
6A	Stud	2	N/A	N/A	B-2036-00
7	Body	1	Q-4536-19	Q-4544-19	Q-4573-19
7A	Body	1	Q-4591-19	Q-4593-19	Q-4595-19
8	Nameplate	1	I-4411-00	I-4411-00	I-4411-00
9	Drive Screw	2	I-2613-00	I-2613-00	I-2613-00
10	C.V. Seat O-Ring	2	D-2576-00	D-2589-00	D-2588-00
11	C.V. Seat	2	L-4644-05	L-4653-05	L-4759-05
12	C.V. Stem	2	G-3246-00	G-3273-00	G-3305-00
13	C.V. Stem O-Ring	2	D-2578-00	D-2587-00	D-2587-00
14	Retainer Nut/Bolt	***	C-1760-00	B-1754-00	B-1754-00
15	Retainer Washer	2	E-2205-00	E-2208-00	E-2229-00
16	C.V. Seat Disc	2	D-2575-00	D-2586-00	D-2649-00
17	Seat Disc Holder	2	F-3002-05	F-3008-05	F-3019-05
18	1st Check Spring	1	A-1746-00	A-1748-00	A-1779-00
19	2nd Check Spring	1	A-1746-00	A-1748-00	A-1779-00
20	Spring Retainer	2	E-2203-05	E-2207-05	E-2228-05
21	Jam Nut	2	C-1706-00	C-1763-00	C-1763-00
22	Cap O-Ring	2	D-2577-00	D-2588-00	D-2651-00
23	C.V. Cap	2	Q-4537-19	Q-4545-19	Q-4574-19
24	Cap Bolt	****	B-1800-00	B-1690-00	B-1881-00
25	Test Cock	3	70-804-01	70-804-01	70-804-01
N/S	Seat Bolt	12	N/A	N/A	B184900

\* 6" & 8" QTY = 24 / 10" QTY = 38

\*\* 6" & 8" QTY = 24 / 10" QTY = 34

\*\*\* 6" QTY = 2 / 8" & 10" QTY = 8

\*\*\*\* 6" QTY = 12 / 8" & 10" QTY = 24

### Repair Kits

Check Valve Repair Kit 40-00C-02 40-00E-02 40-00G-02  
(12, 13, 14, 15, 16, 17, 18, 20, 21, 22)

Seat Repair Kit 40-00C-03 40-00E-03 40-00G-03  
(10, 11, 22)

Rubber Repair Kit 40-00C-04 40-00E-04 40-00G-04  
2 each (10, 13, 16, 22)

## 2 1/2-10" Seat Removal Tool Specifications

To assist in removing seats in 2-1/2" - 10" 40 series backflow preventers use schedule 40 pipe cut to the following dimensions.

<u>Seat Size</u>	<u>Type</u>	<u>Size</u>	<u>Length</u>	<u>No. Slots</u>	<u>Slot Width</u>	<u>Slot Depth</u>
2-1/2" & 3"	Check Valve	2"	8"	2	7/16"	5/8"
4	Check Valve	3"	10"	2	9/16"	3/4"
6	Check Valve	4"	13"	2	11/16"	3/4"
8	Check Valve	6"	16"	3	11/16"	7/8"
2-1/2" - 6"	Relief Valve	1-1/4"	8"	2	1/2"	1/2"
8" & 10"	Relief Valve	1-1/2"	8"	2	1/2"	1/2"

Slots to be equally apart.

Drill hole through other end of pipe to facilitate bar size used for handle.