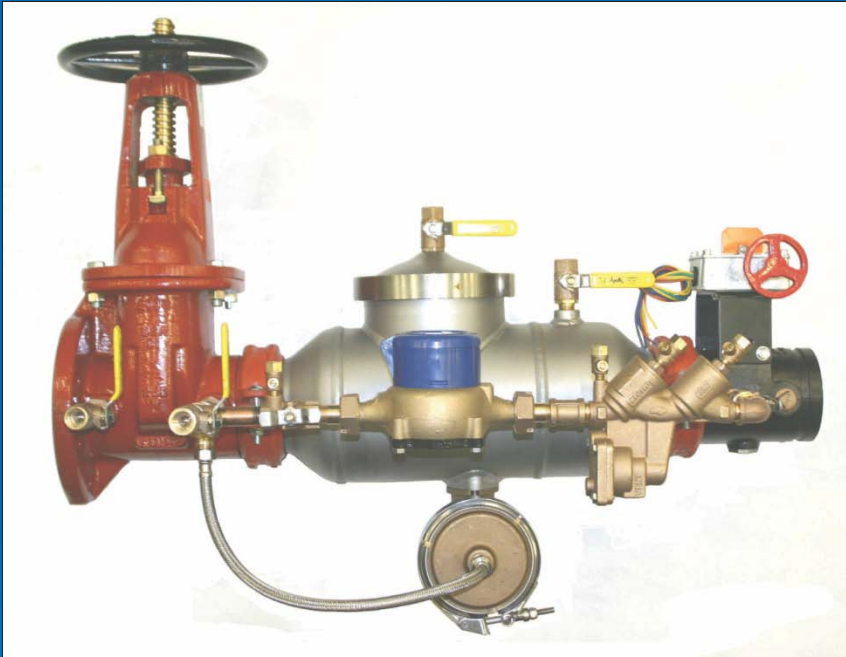


DC4A, DC4AN, DCDA4A, DCDA4AN RP4A, RP4AN, RPDA4A, RPDA4AN 2 1/2" – 6"



Check Cover Removal

- Cover is secured by a V-band clamp and o-ring sealed.
- To remove clamp, loosen lock nut until the latch can be disengaged from the T-bolt.
- Cover has no spring load.
- A flat screwdriver will help pry the lid from the body.



Check Valve Removal RP 4A

- Check valve modules are secured by retainers and o-ring sealed.
- #1 check must be removed before the #2 can be removed.



Check Valve Removal RP 4A

- Remove the retaining clip by pinching the clip ears together.
- Remove the clip and retaining ring.
- Pull the module straight out of the body.



Check Valve Removal RP 4AN

- Check valve modules are secured by a spacer and o-ring sealed.
- Remove the spacer from the body.
- Pull the module straight out of the body.



Check Disc Replacement

- Remove the lock nuts and the retaining plate on the back of the module.
- ** Do not remove any hardware from the spring side of the module.
- Separate the disc retainer from the module.



Check Seat Removal

- The check seat is part of the check module and can not be removed.
- If the seat is damaged, the complete check module will need to be replaced.



Check Valve Reassembly Notes

- Reassemble check modules in reverse order.
- Do not over tighten the lock nuts.



Check Valve Reassembly Notes RP 4A

- The retaining ring is installed against the check.
- Install the retaining clip by inserting one end into the body groove first. Then pinch the ears together as you insert the rest of the clip.
- The clip will snap into place when it is fully seated.



Check Valve Reassembly RP 4AN

- Lubricate check o-rings.
- Push modules straight into body.
- Insert spacer into body.
- Replace access cover.



RV Cover Removal

- Cover is secured by a V-band clamp and sealed by the diaphragm.
- Remove sensing line.
- To remove clamp, loosen lock nut until the latch can be disengaged from the T-bolt.
- Pull cover from body.



RV Stem Removal

- Remove the RV module by grasping the diaphragm plate and pulling straight out of the body.



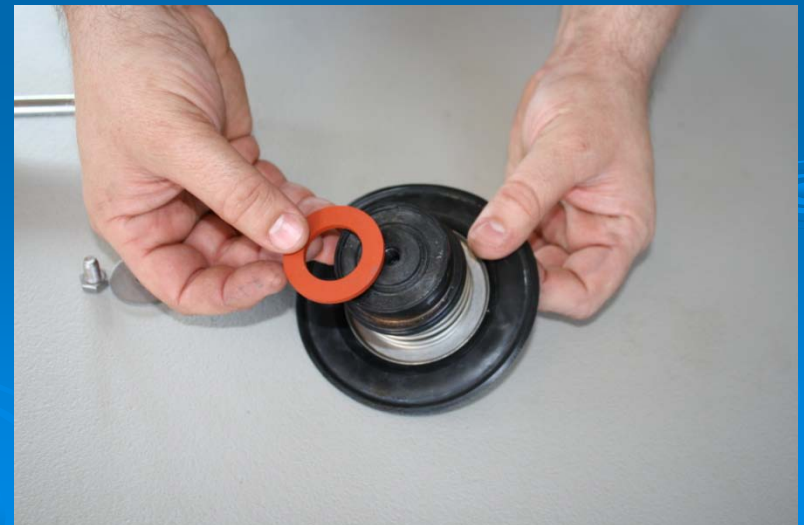
RV Seat Removal

- The seat is pushed into the body and o-ring sealed.
- Simply pull the seat straight out of the body.



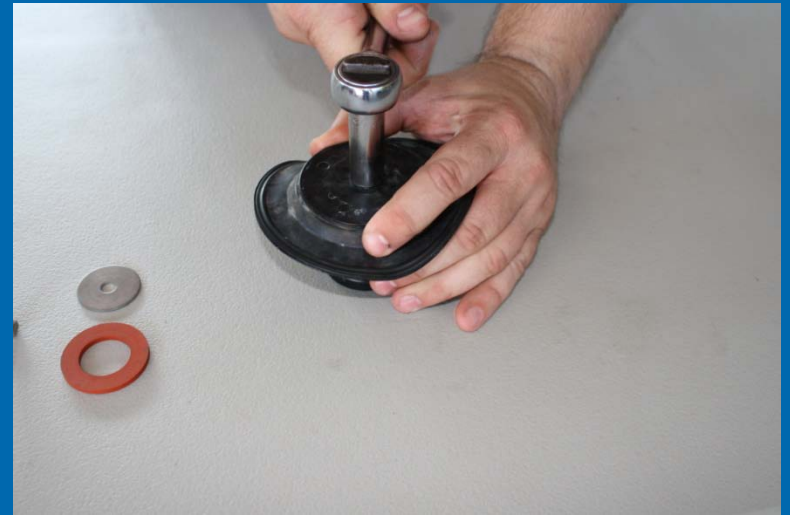
RV Disc Replacement

- Holding the module in one hand, remove the bolt and washer.
- Remove the seat disc.



Disassemble RV Module

- Module is spring loaded.
- Holding the diaphragm plate firmly, remove the retaining bolt.



Disassemble RV Module

- Remove the bushing from the stem.
- Remove the stem o-ring.



RV Reassembly Notes

- Replace and lubricate o-rings.
- Reassemble in reverse order.
- Push module straight into body.
- Make sure the outer edge (bead) of the diaphragm fits into the groove on RV body.

