

# Model 805Y (2 1/2"-10")

## PARTS LIST

### MODEL 805Y

Fig No.	Description	QTY	SIZE 2 1/2"	SIZE 3"	SIZE 4"	SIZE 6"	SIZE 8"	SIZE 10"
2	Seat Ring	2	780-273	780-274	780-275	780-276	780-277	780-278
2A	Bushing	2	780-280	780-280	780-281	780-281	780-282	780-282
3	Guide	2			190-001	190-002	190-003	190-004
4	Cover	2	780-306	780-307	780-308	780-309	780-310	780-311
4A	Bushing	2	780-312	780-312	780-313	780-313	780-313	780-313
5	Disc Holder	2	190-013	190-014	190-005	190-006	190-007	190-008
6	Disc washer	2	190-016	190-017	190-009	190-010	190-011	190-012
7	Stern	2	780-332	780-333	780-334	780-335	780-336	780-337
7A	Screw				511-515-08	511-515-08	511-515-08	511-515-08
7B	Washer	2			780-338	780-338	780-338	780-338
9	Spring		780-341	780-342	780-343	780-344	780-345	780-346
11	Seat Disc	2	780-357	780-358	780-359	780-360	780-361	780-362
12	O-Ring	2	399-238-72	399-246-72	399-254-72	399-264-72	399-273-72	740-095
13	Capscrew	16	511-516-08	511-516-08	511-517-10	511-519-12	511-520-12	
13	Capscrew	24						511-520-14
14	O-Ring	2	398-244-72	392-252-72	398-263-72	398-272-72	398-451-72	740-102
15	Locknut	2	521-547-00	521-547-00	521-550-00	521-550-00	521-551-00	521-551-00
16	Gasket	3	780-365	780-366	780-367	780-368	780-369	780-370
17	Bolt	12	511-019-18	511-019-20				
17	Bolt	24			511-019-22	511-020-26	511-020-28	
17	Bolt	26						511-021-30
17A	Nut	12	521-019-00	521-019-00				
17A	Nut	24			511-019-00	521-020-00	521-020-00	
17A	Nut	36						511-021-00
40	Ball Valve	4	781-047	781-047	781-047	781-048	781-048	781-048
41	Nipple*	4	571-181-44	571-181-44	571-181-44	571-181-55	571-181-55	571-181-55

#### Gate Valves

42	Resilient Seated NRS		781-005	781-006	781-007	781-008	781-009	787-010
42	Resilient Seated OS&Y		780-891	780-893	780-895	780-897	780-899	780-901
50	Aircock	2	780-416	780-416	780-416	780-416	780-416	780-416
51	O-Ring	2	399-014-72	399-014-72	399-116-72	399-116-72	399-118-72	399-118-72

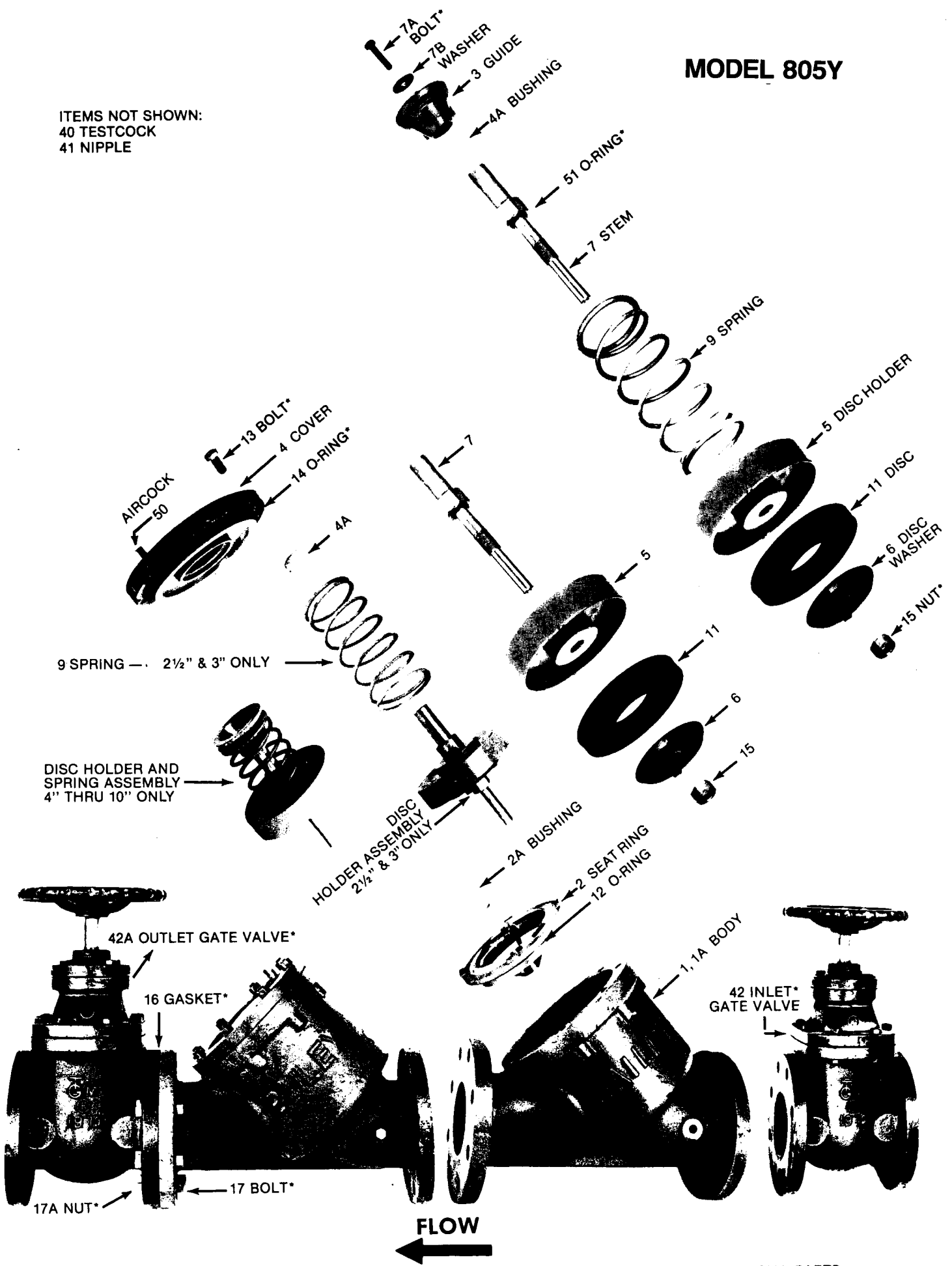
#### Assemblies/Kits

	<b>Spring Assembly</b>		905-086	905-088	902-467	902-469	902-471	902-473
	(3, 4A, 5, 6, 7A, 7B, 9, 11, 15, and 51)							
	<b>Rubber Parts</b>		905-059	905-060	905-061	905-062	905-063	905-064
	(11 and 14)							
	<b>Seat Kit</b>		902-386	902-385	902-384	902-383	902-382	902-381
	(2, 2A, 2B, and 12)							
	<b>Lg. Mounting Kit</b>		905-036	905-037	905-038	905-039	905-040	905-041
	(16,17,17A; Both Ends)							
	<b>Cover Assembly</b>		902-497	902-498	902-499	902-500	902-501	902-502
	(4, 4A, 14)							

\*Not Shown

# MODEL 805Y

ITEMS NOT SHOWN:  
40 TESTCOCK  
41 NIPPLE



\*COMMERCIAL PARTS

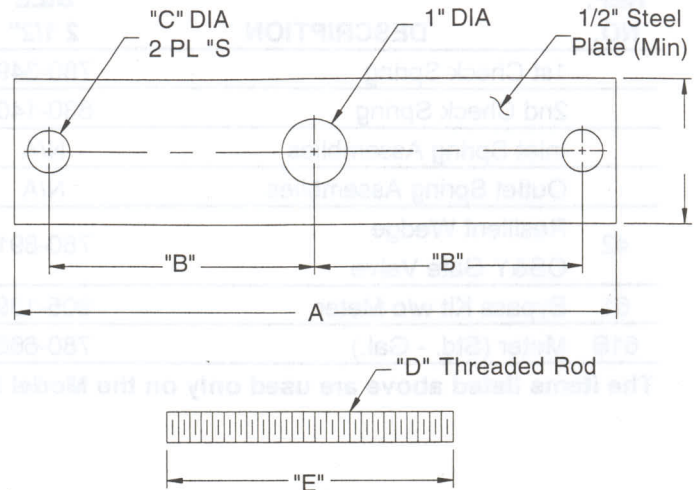
# Spring Removal Tool

Dimensions (Inches)					
Valve Size	A	B	C	D	E
4"	9 1/2	4 1/4	5/8	1/2 - 13	5 1/2
6"	12 1/2	5 5/8	3/4	5/8 - 11	5 1/2
8"	14 1/4	6 3/8	7/8	3/4 - 10	7
10"	16 1/2	7 1/2	7/8	3/4 - 10	7

**NOTE:** This information is provided to expedite servicing of FEBCO products. One tool may be fabricated for use on all required sizes by drilling all holes at appropriate dimensions in a single steel plate of maximum required length.

To order a FEBCO spring removal tool order part number 905-121

**CAUTION:** To avoid possible injury during use, do not fabricate tool from lesser strength material or to smaller dimensions than the minimums shown.



# Seat Ring Tool

**For Model 825 Only.**

Dimensions (Inches)					
Valve Size	A	B	C	D	E
1 1/2"	1 1/2	6	3/8	3/4	3/4
2"	1 1/2	6	3/8	3/4	3/4
2 1/2"	2 1/2	8	1/2	1	1
3"	3	8	1/2	1	1
4"	4	9	1/2	1	1
6"	6	10	5/8	1	1
8"	8	12	5/8	1	1
10"	8	12	5/8	1	1

**NOTE:** This information is provided to expedite servicing of FEBCO products.

