

# DCV, RPZ 2 1/2" - 8"



**FLOMATIC** VALVES

*Danfoss*

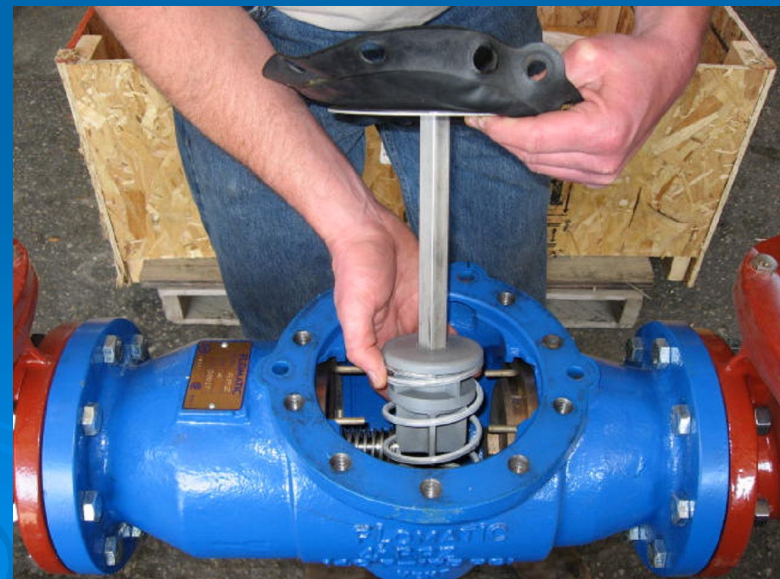
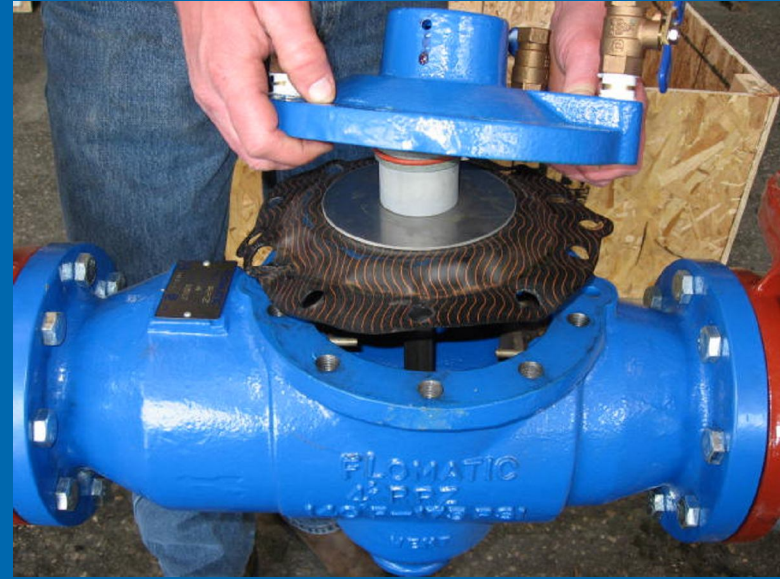
# Single Access Cover Removal

- The RPZ cover is spring loaded and sealed by the diaphragm.
  - \*\* Hold cover firmly while removing bolts.
- The DCV cover has no spring load and is o-ring sealed.



# Single Access Cover Removal

- Lift cover straight off.
- Remove RV stem assembly and spring from body.



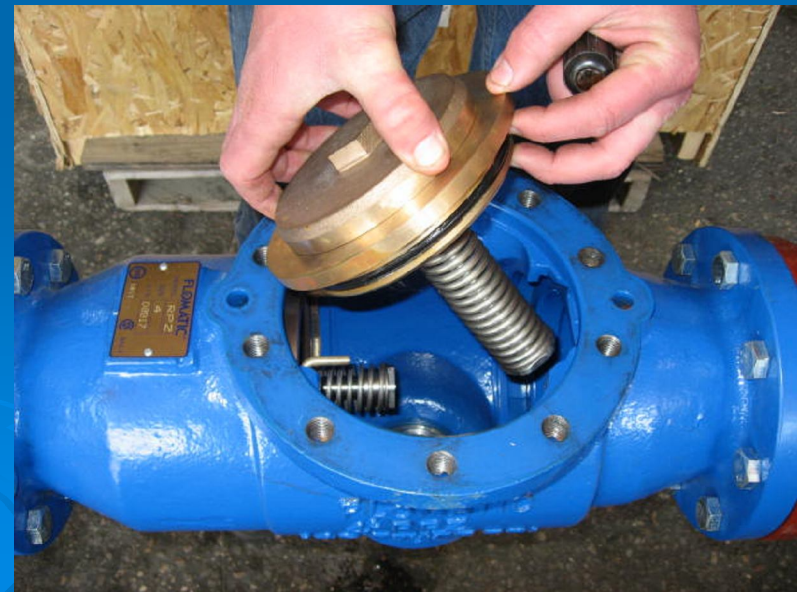
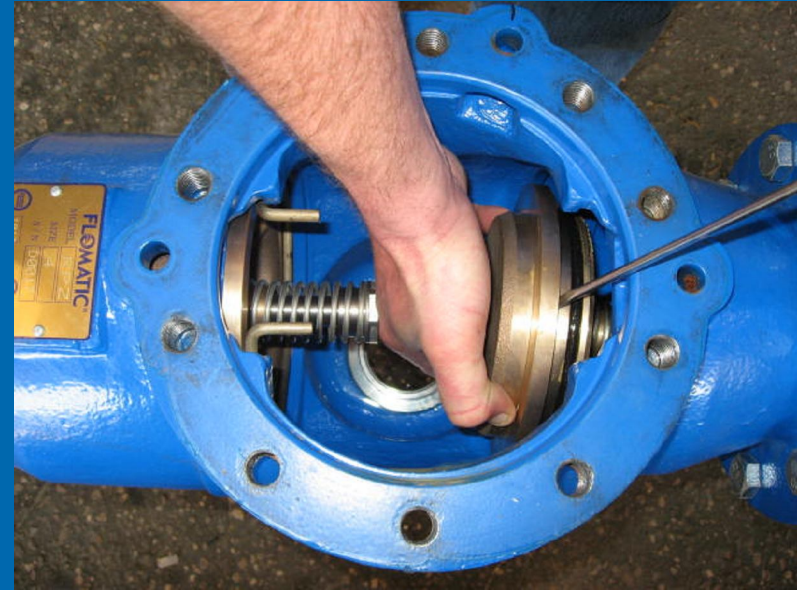
# Check Valve Removal

- Check valve modules.
- Modules are o-ring sealed and secured by spring clips.
- Pinch together the exposed ends of the clip and pull away from module.  
\*\* Use adjustable pliers if necessary.



# Check Valve Removal

- Once the spring clips are removed, the modules can be pulled straight out of body.
- #1 check must be removed before #2 can be removed.



# Disassemble Check Valve

- 2 1/2"-3" sizes springs are **not** captured.
- 4"-8" spring tension is captured.
- Unscrew check valve stem from disc holder.
- Place a wrench on the spring retainer and a wrench on the disc holder.



# Disassemble Check Valve

- Loctite is used on the threads of the stem and disc holder.
- Sometimes an impact or much force is needed to break this free.



# Check Disc Replacement

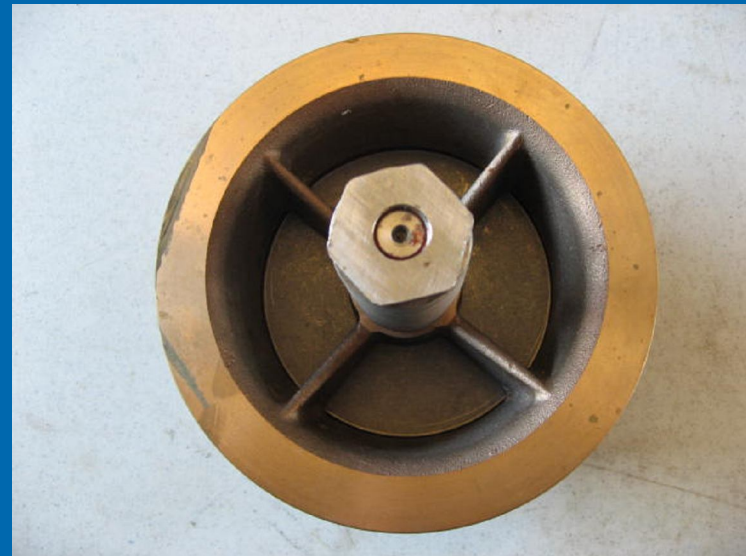
- Once check module is disassembled, the disc holder, retainer, and disc are free.
- Reassemble in reverse order.





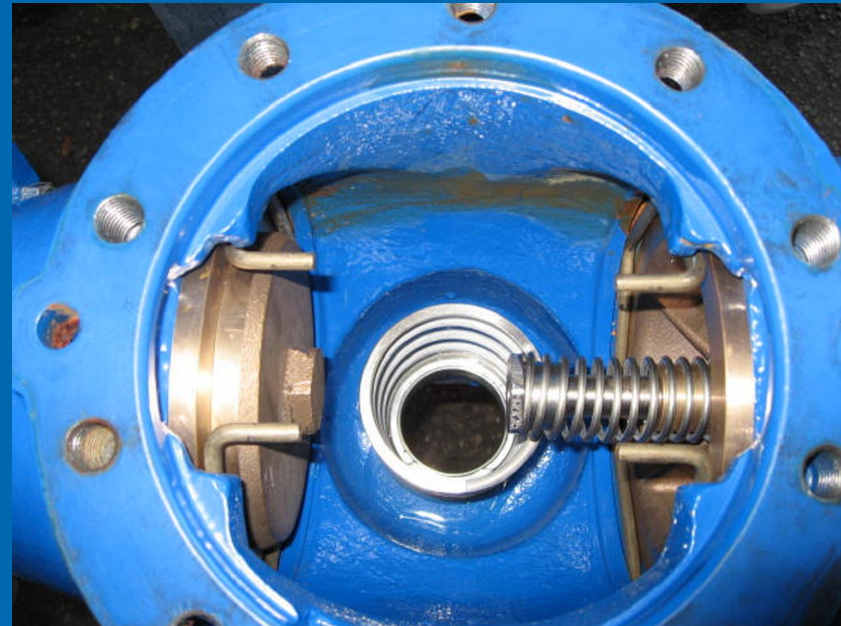
# Check Seat Removal

- The check seat is part of the module and should not be removed.
- If the seat is damaged, the entire module must be replaced.



# *Check Valve Reassembly Notes*

- Lubricate o-rings.
- Push checks into body.
- Replace spring clips in reverse order.



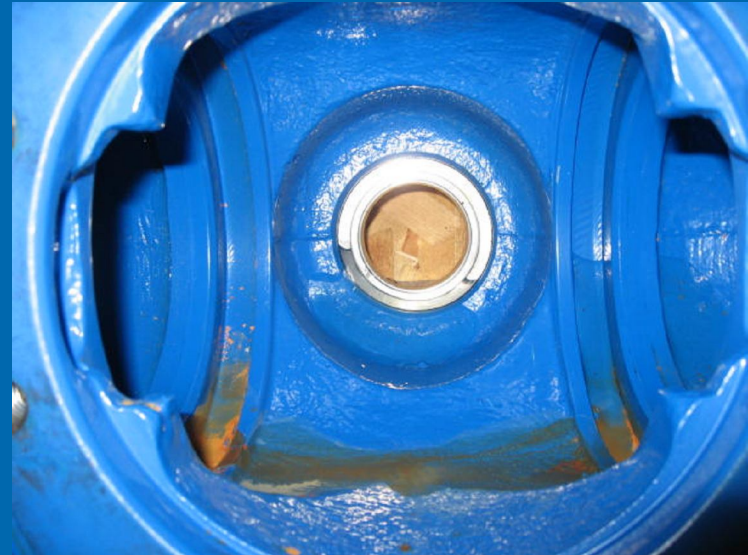
# RV Stem Removal

- The RV stem and spring are situated between the check valves and are free once the single access cover is removed.



# RV Seat Removal

- Unless damaged there is no need to remove RV seat.
- The seat is pushed firmly into body and is o-ring sealed.



# RV Diaphragm Replacement

- The diaphragm is located on the upper stem.
- Unscrew the RV piston from the stem.
- Reassemble in reverse order.



# RV Disc Replacement

- The RV disc is located on the lower stem.
- Unscrew the disc retainer from the RV stem.
- Reassemble in reverse order.



# *RV Reassembly Notes*

- Center the spring over the RV seat.
- Position the RV stem into the body.
- Lubricate plunger o-ring.



# Single Access Reassembly Notes

- Place cover over RV assembly.
  - Make sure the diaphragm does not block the 3 test cock ports in the body.
- \*\* Place lid bolts in cover to help position the diaphragm correctly.

