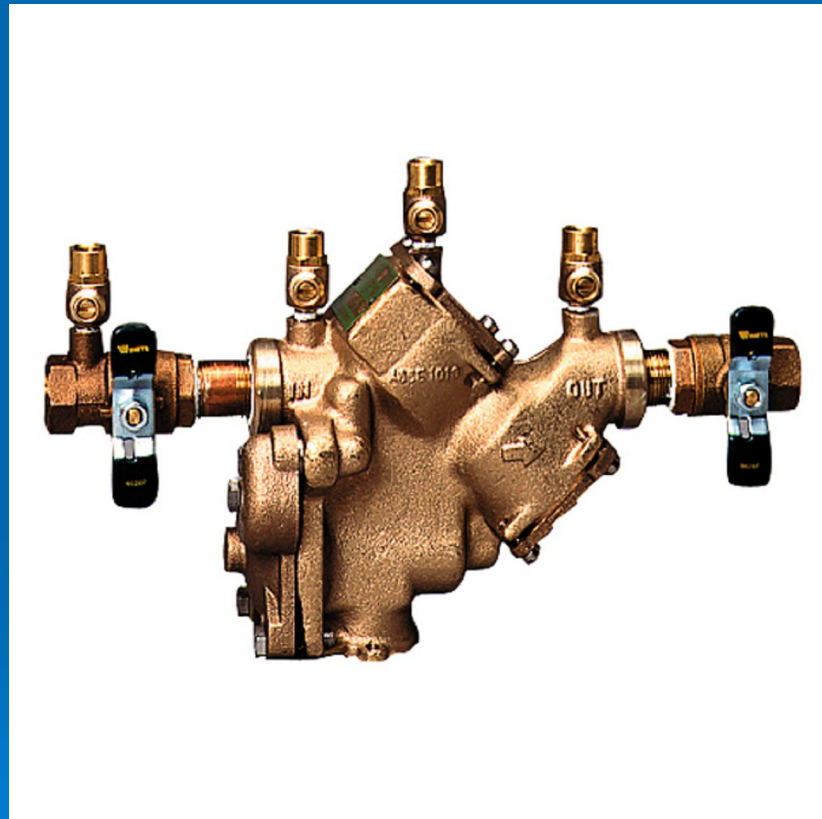


709 , 909
3/4"-2"



WATTS[®]

Modification Overview

- The 909M1 (1989) in the $\frac{3}{4}$ -2" sizes only.
- Change was in the body only- internal components are the same.
- The 709 in $\frac{3}{4}$ -2" sizes only, was discontinued in 1993.

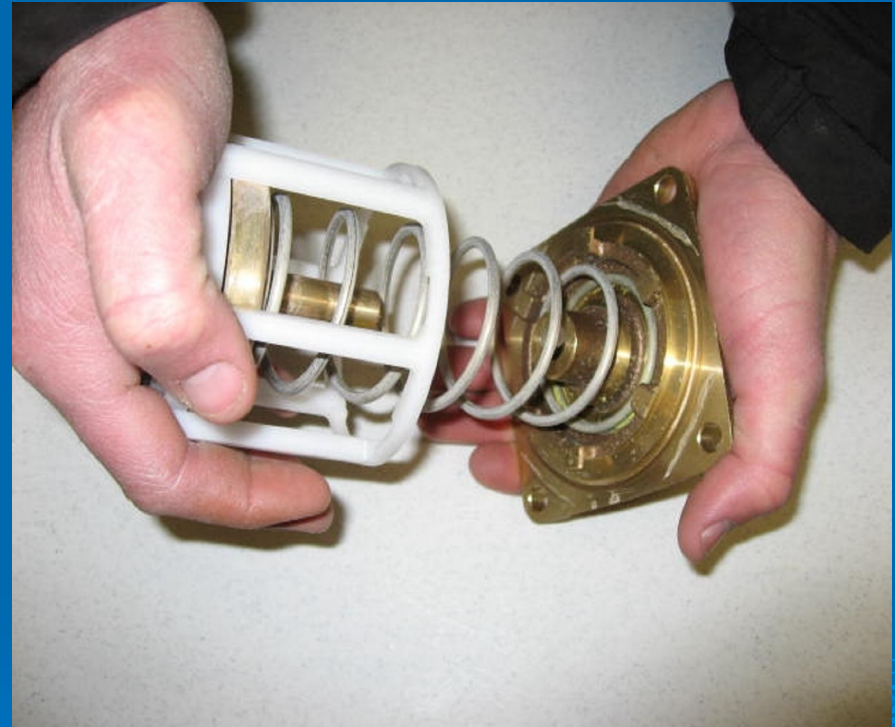
Check Cover Removal

- Cover is o-ring sealed.
- Check valve assembly is attached to the cover and spring is contained.
- Pull cover and assembly straight out of the body. (Do not twist)



Check Valve Removal

- The check valve is attached to the cover with a bayonet locking system.
- Check valve assembly is spring loaded.
- Holding the assembly in both hands, rotate the seat (cage) $\frac{1}{4}$ turn.



Check Seat Removal

- Once the cover and check valve are removed the seat or (cage) is free.
- Seat is sealed by an o-ring.



Check Disc Replacement

- Check disc and disc holder can be replaced as one piece.



Check Valve Reassembly Notes

- Reassemble check valve in reverse order.
- Apply lubricant to seat o-ring and lid o-ring.



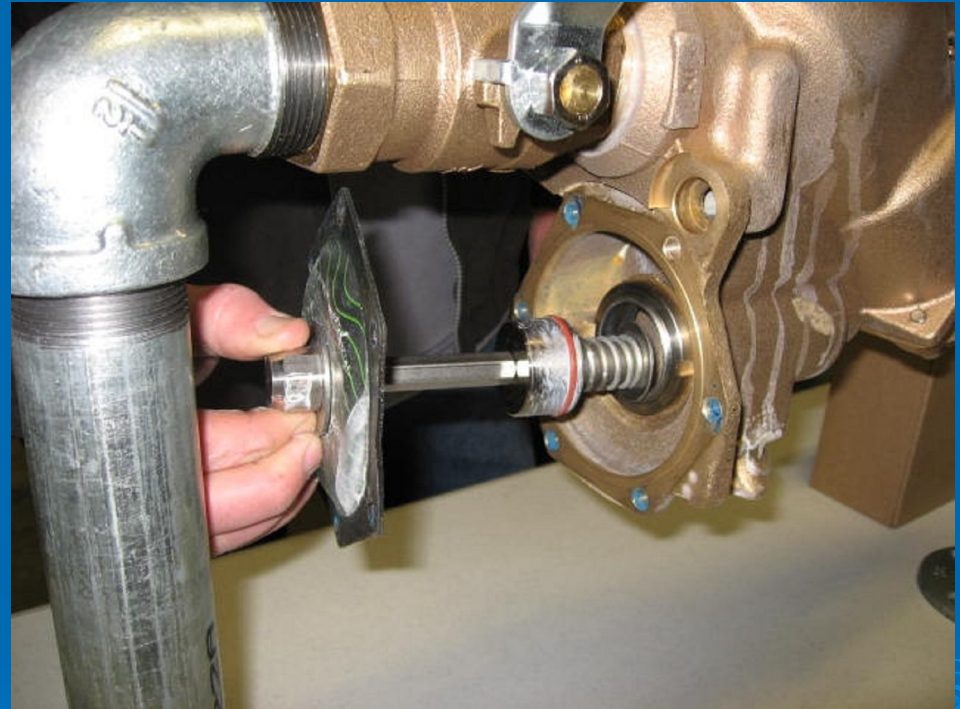
RV Cover Removal

- RV Cover is sealed by the diaphragm.
- Spring load is contained.



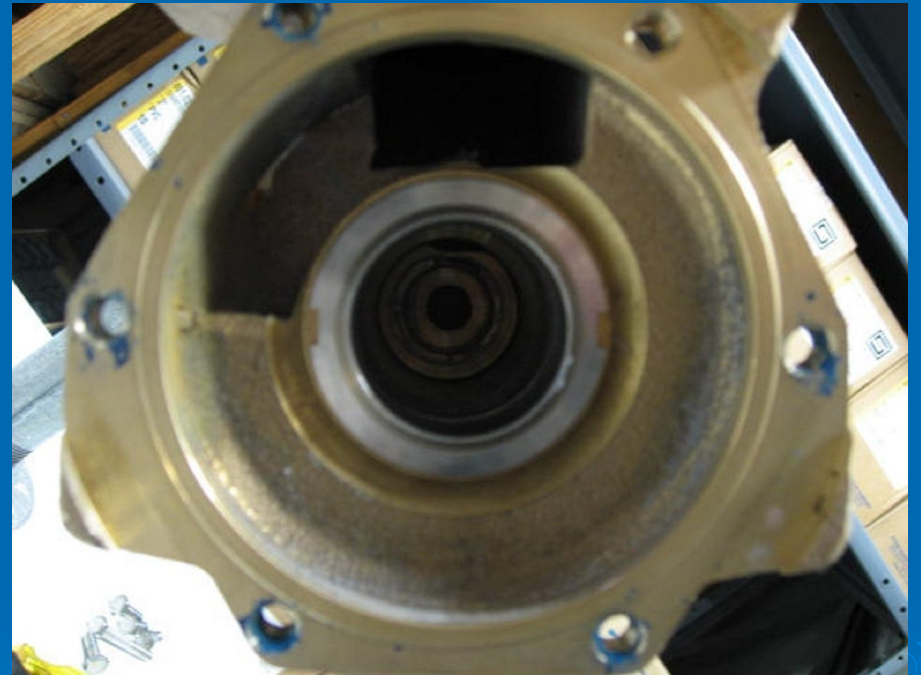
RV Stem Removal

- The stem subassembly can be pulled straight out of the body.



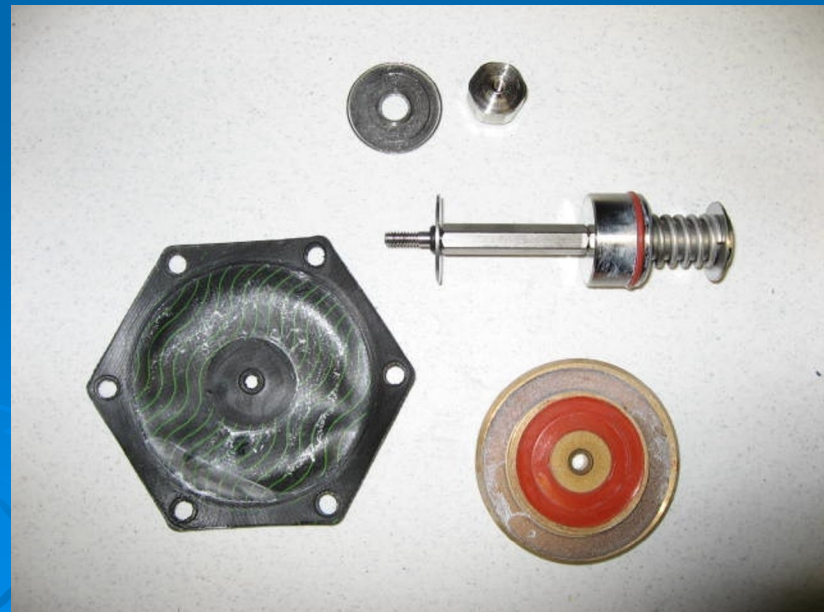
RV Seat Removal

- Unless damaged, there is no need to remove the RV seat.
- The RV seat is threaded and sealed by an o-ring.



RV Rubber Replacement

- Replace diaphragm and RV disc assembly.
 - * Simply unscrew the stem cap from the stem.
- Replace stem o-rings.
- Apply lubricant to o-rings.



RV Reassembly Notes

- Insert RV stem assembly into body.
 - * Carefully guide and depress spring tension until the piston is completely into position.
 - * Insert screw driver up into vent opening to hold stem in place.
- Bolt cover down evenly.

