

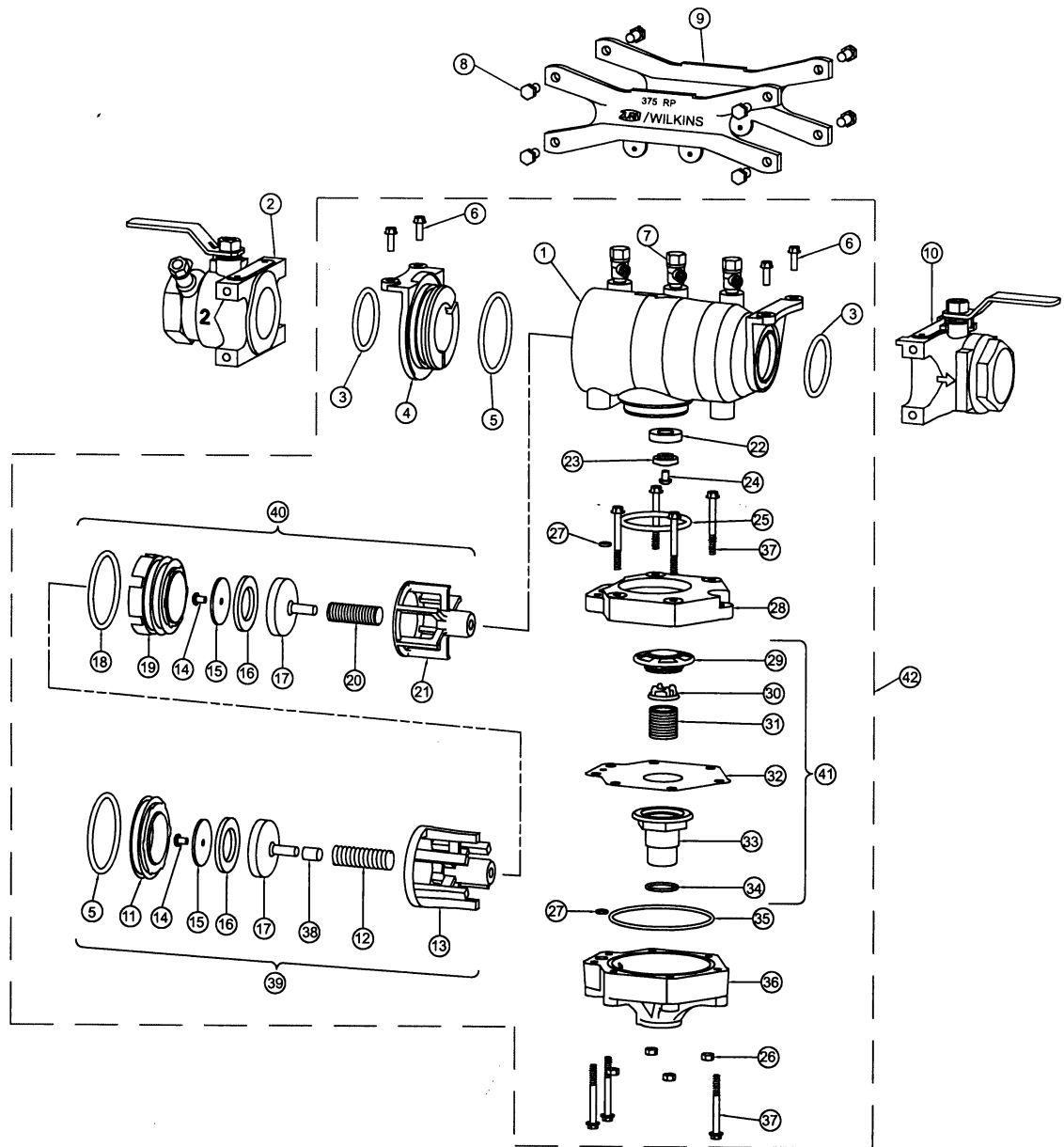
# MODEL 375

## Reduced Pressure Principle Backflow Preventers 1-1/4" to 2"

# WILKINS

A **ZURN** Company

ITEM NO.	DESCRIPTION	1-1/4"	1-1/2"	2"
1	HOUSING	374-1	374-1	374-1
2	INTEGRAL INLET BV	374-48A	375-48A	376-48A
3	O-RING	331N	331N	331N
4	SLEEVE	374-2	374-2	374-2
5	O-RING	337N	337N	337N
6	BOLT	352-11	352-11	352-11
7	TEST COCKS	14-860	14-860	14-860
8	BOLT	959-11B	959-11B	959-11B
9	STRUT (NOT AVAILABLE)	374-1S	374-1S	374-1S
10	INTEGRAL OUTLET BV	374-48B	375-48B	376-48B
11	SEAT, #1	374-18A	374-18A	374-18A
12	SPRING, #1	374-33A	374-33A	374-33A
13	SPRING RETAINER, #1	374-80A	374-80A	374-80A
14	BOLT	374-11A	374-11A	374-11A
15	SEAL RETAINER	374-14A	374-14A	374-14A
16	SEAL WASHER	374-12A	374-12A	374-12A
17	POPPET	374-30	374-30	374-30
18	O-RING	336N	336N	336N
19	SEAT, #2	374-18B	374-18B	374-18B
20	SPRING, #2	374-33B	374-33B	374-33B
21	SPRING RETAINER, #2	374-80B	374-80B	374-80B
22	SEAL WASHER	374-12	374-12	374-12
23	SEAL RETAINER	374-14CU	374-14CU	374-14CU
24	BOLT	952-11	952-11	952-11
25	O-RING	334N	334N	334N
26	NUT	5752-9	5752-9	5752-9
27	O-RING	109N	109N	109N
28	BODY, RV	374-1CU	374-1CU	374-1CU
29	SEAT, RV	374-18CU	374-18CU	374-18CU
30	SPRING GUIDE	374-80CU	374-80CU	374-80CU
31	SPRING, RV	374-33CU	374-33CU	374-33CU
32	DIAPHRAGM	374-43	374-43	374-43
33	PLUNGER, RV	374-34	374-34	374-34
34	O-RING	123N	123N	123N
35	O-RING	243N	243N	243N
36	COVER	374-3	374-3	374-3
37	BOLT	374-11	374-11	374-11
38	SPACER	374-2A	374-2A	-
39	#1 CHECK ASSY	374-300A	374-300A	374-300A
40	#2 CHECK ASSY	374-300B	374-300B	374-300B
41	RELIEF VALVE STEM ASSY	374-50	374-50	374-50
42	VESSEL W/CHECKS & RV	RK114-375V	RK114-375V	RK114-375V



### REPAIR KITS

RK114-375R		REPAIR KIT MODEL 375 1-1/4" - 2"		RK114-375		REPAIR KIT MODEL 375 1-1/4" - 2"		RK114-375V		REPAIR KIT MODEL 375 1-1/4"-2"	
ITEM	PART NO.	QTY.	DESCRIPTION	ITEM	PART NO.	QTY.	DESCRIPTION	ITEM	QTY.	DESCRIPTION	
3	331N	2	O-RING	3	331N	2	O-RING	42	1	VESSEL W/CHECKS & RV	
5	337N	2	O-RING	5	337N	1	O-RING				
16	374-12A	2	SEAL WASHER	39	374-300A	1	#1 CHECK ASSY				
18	336N	1	O-RING	40	374-300B	1	#2 CHECK ASSY				
22	374-12	1	SEAL WASHER	22	374-12	1	SEAL WASHER				
25	334N	1	O-RING	23	374-14CU	1	SEAL RETAINER				
27	109N	2	O-RING	25	334N	1	O-RING				
32	374-43	1	DIAPHRAGM	27	109N	2	O-RING				
34	123N	1	O-RING	35	243N	1	O-RING				
35	243N	1	O-RING	41	374-50	1	RELIEF VLV. STEM ASSY				

