

40-500  
1/2" - 2"



# *Modification Overview*

- The ½"-2" 40-500 PVB was discontinued in 2003.

# Canopy Removal

- The canopy is secured by two screws.



# Bonnet Removal

- The bonnet is threaded into the body and sealed by an o-ring.
- Unscrew the bonnet counter clockwise.
- There is no spring load.

Note: If float spring is damaged, the bonnet must be replaced.



# Float Removal and Service

- The float is free once the bonnet has been removed.
- Replace the rubber seal by pulling it from the groove on the float.



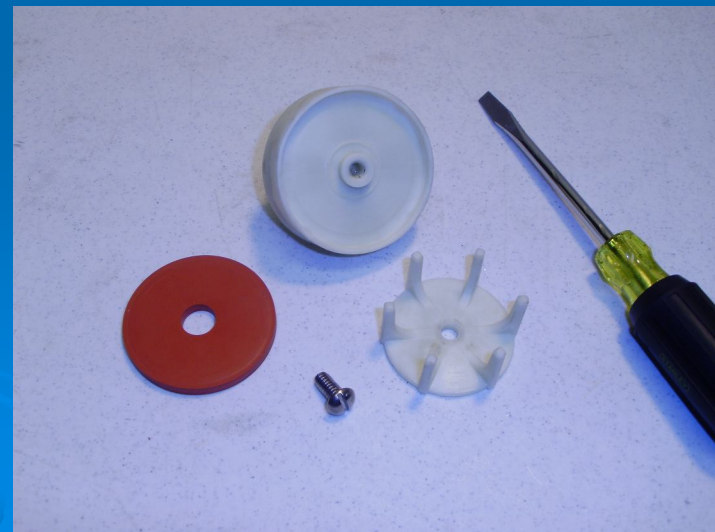
# Check Valve Removal

- Check valve is spring loaded.
- Remove spring retainer by pressing down and rotating to clear tabs on body.
- Remove spring and poppet.



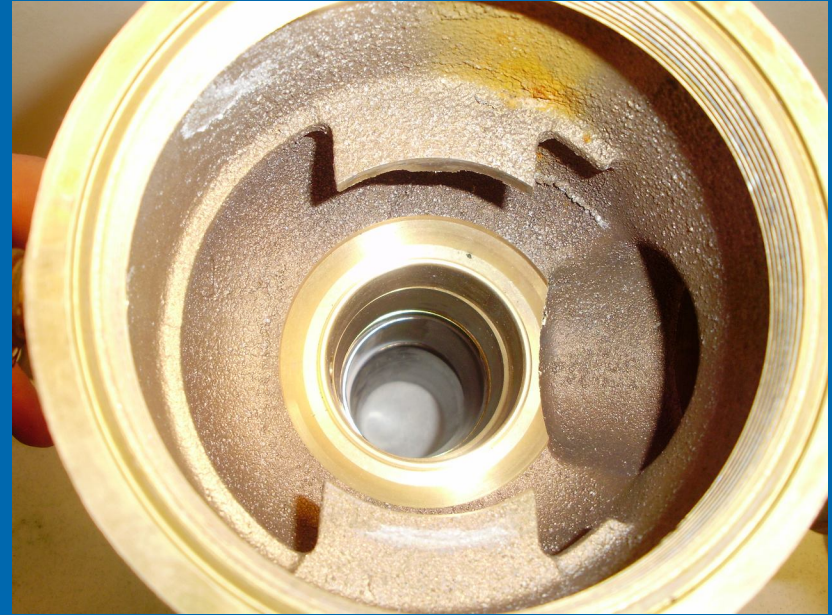
# Check Disc Replacement

- The check disc is free once the retaining screw and guide are removed.



# Check Seat Replacement

- The check seat is part of the body.
- If the seat is damaged the assembly must be replaced.





# Reassembly Notes

- Reassemble in reverse order.
- Place large end of check spring down in body.
- The lip on the retainer faces down toward the spring.
- Make sure bonnet guide stem is inserted into center of float.

