

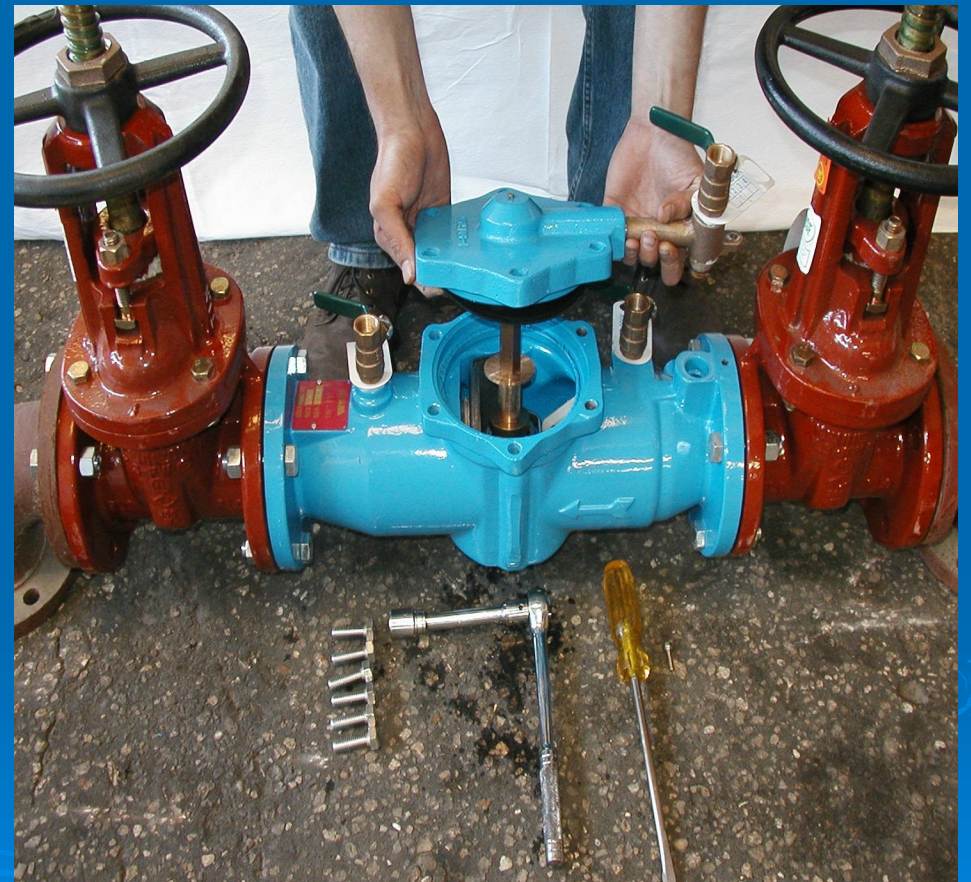
007,007DCDA  
009  
2 1/2"-3"



**WATTS**<sup>®</sup>

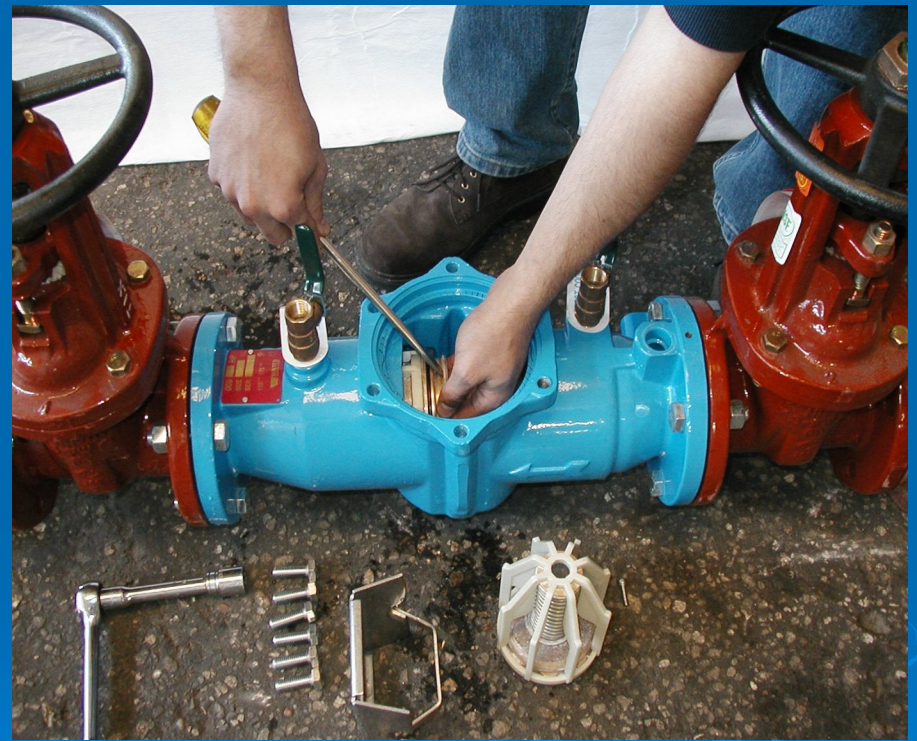
# Single Access Cover Removal

- Cover is o-ring sealed.
- 007 cover has no spring load.
- 009 cover has spring load from the RV spring.
- \* Remove bolts while holding cover down.
- \* RV Stem may come out with cover.
- Lift cover straight off.



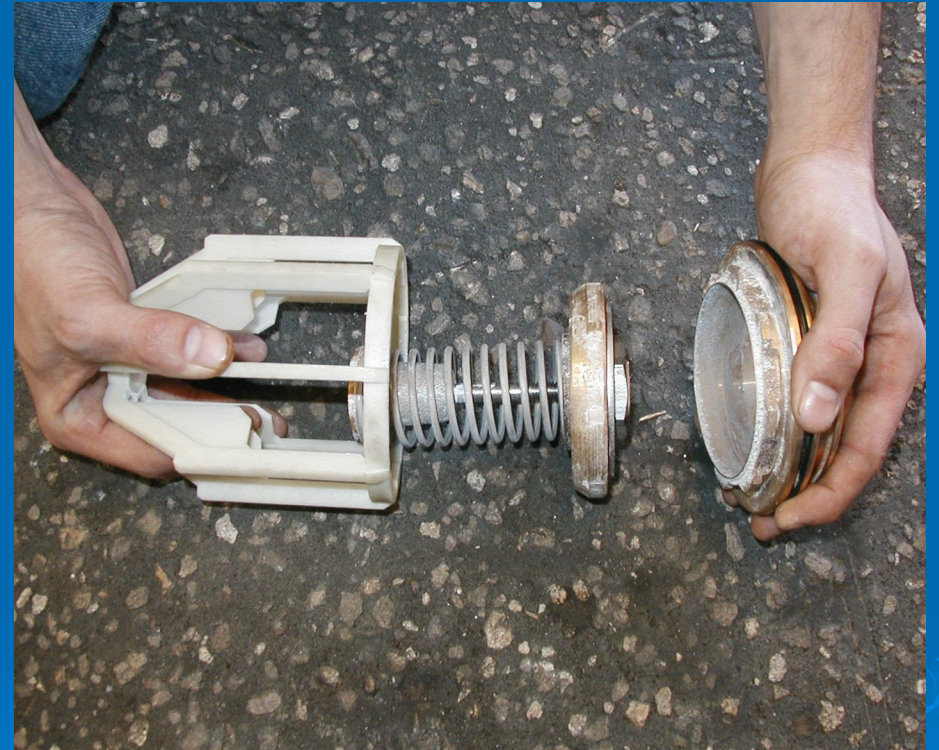
# Check Valve Removal

- Check valve modules.
- Modules sealed by o-ring and secured by a retainer.
- Slide retainer straight out of body.
- Modules can now be removed by hand or with a screwdriver flat.



# Check Seat Removal

- Check seats are part of each module.
- Check seats are attached to the cage with a bayonet type locking system.
  - \* Check spring is contained.
  - \* Hold the cage in one hand, push the seat inward and rotate counter-clockwise.



# Check Disc Replacement

- Remove retaining nut from disc holder and replace rubber.



# *Check Valve Reassembly Notes*

- Reassemble in reverse order.
- Apply lubricant to o-rings.
- If check retainer does not slide into place easily, make sure check valves are seated properly.



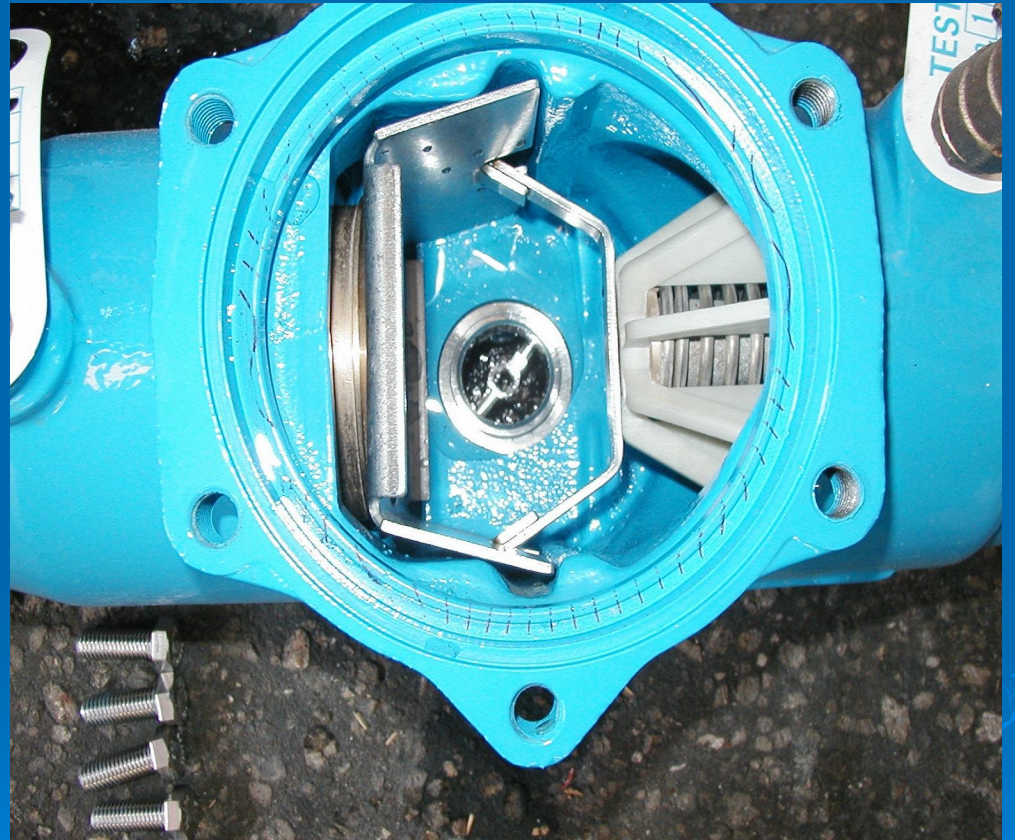
# RV Stem Removal

- The RV Stem and spring are situated between the check valves and are free once the single access cover is removed.



# RV Seat Removal

- Unless damaged, there is no need to remove RV seat.
- The seat is pushed firmly into the body and is o-ring sealed.





# RV Rubber Replacement

- The RV molded disc is on the lower stem. Simply unscrew the nut from the guide.
  - \* Replace the o-ring behind the disc.
- The diaphragm is on the upper stem. Simply unscrew the stem cap from the stem.



# *RV Reassembly Notes*

- Center the spring on the seat and insert the cover and stem assembly as a unit straight into the body.
- Make sure that the lower guide on the RV stem goes through the guide hole in the seat.
- If the cover will not press flat against body, the stem is crooked and must be realigned.

