

C200,757 / C300, 757DCDA
C400, 957 / C500, 957RPDA
M200 / M300 – M400 / M500
2 1/2" - 10"

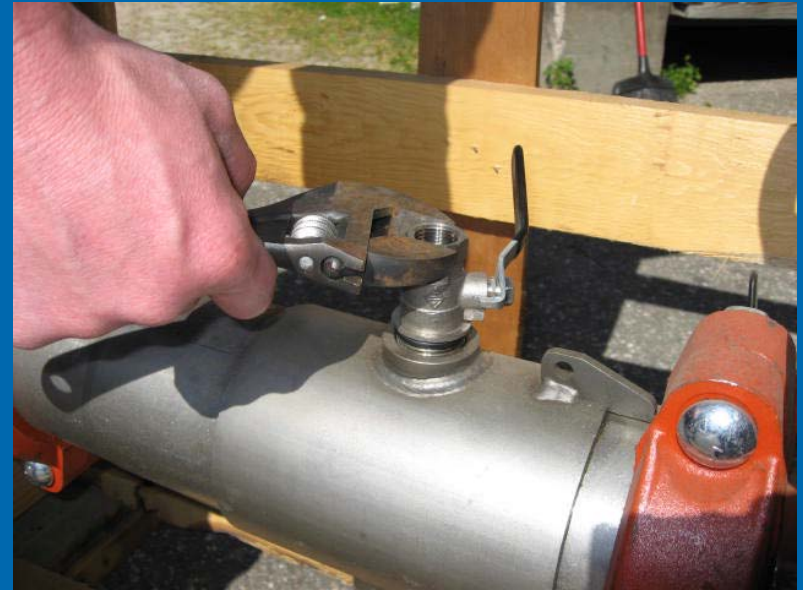


Modification Overview

- (a) suffix after the model number indicates the original version that contains a bi-link check valve.
- The current version contains a tri-link check valve.
- Repair steps are the same for both models.

Check Cover Removal 2 1/2"-6"

- Cover slides back and is o-ring sealed.
- Remove test cock # 3 from the body.
- Insert a screwdriver through the hole on top of the cover sleeve.
- Using both hands, rotate the cover 1/4 turn clockwise and counter-clockwise to break o-ring seal.



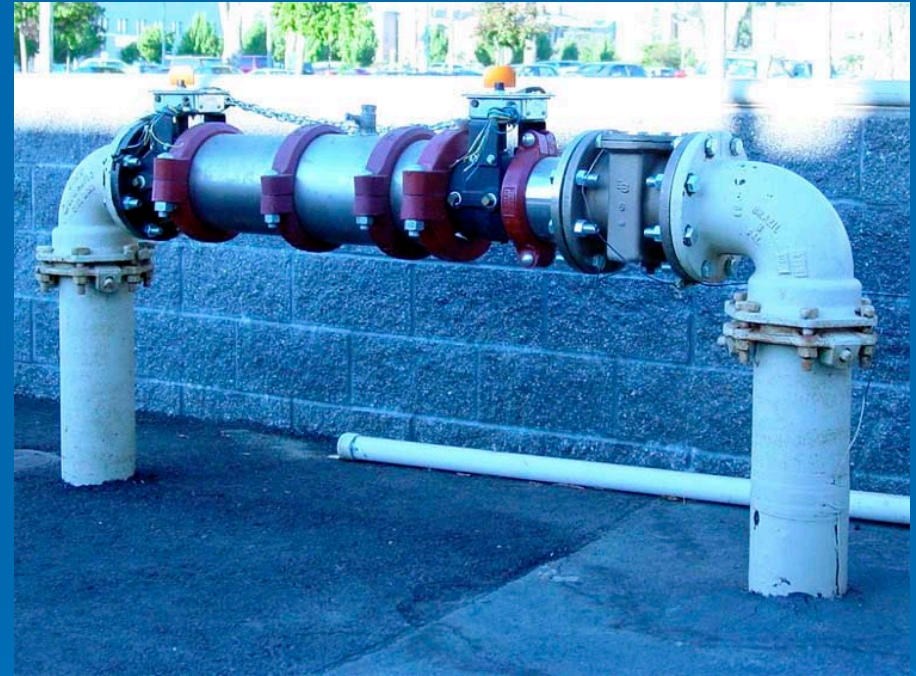
Check Cover Removal 2 1/2"-6"

- Slowly slide the cover sleeve to the downstream side of the housing.
- Once fully pulled back, turn the sleeve 90 degrees.



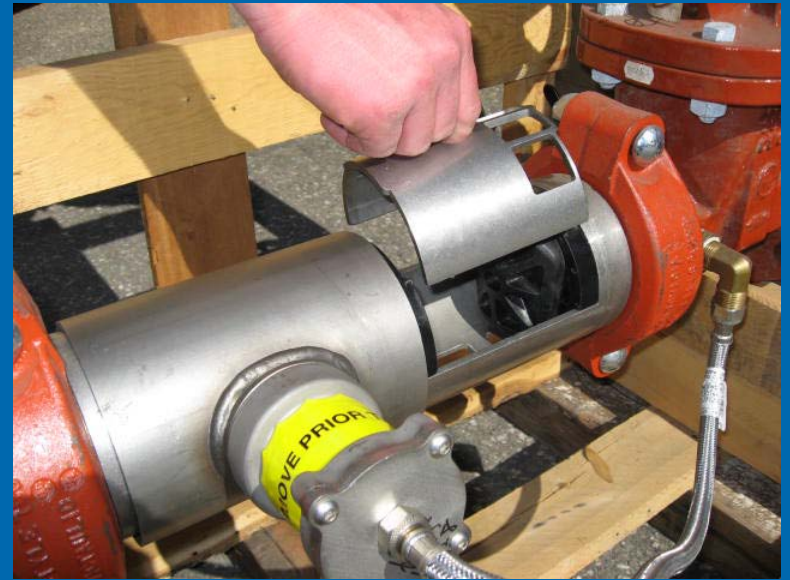
Check Cover Removal 8"-10"

- For the 6-10" sizes, remove both Victaulic couplers.
- Slide the downstream gasket to the downstream side of the housing.
- The upstream gasket can stay in place.



Check Valve Removal

- Check valve modules.
- Modules are o-ring sealed.
- Remove the check retainer.
- Remove check 1 first, then check 2.
- Using two flat blade screwdrivers, gently pry the module out of the body.



Check Seat Removal

- The check seat is part of the module.
- If seat is damaged, the entire module will have to be replaced.



Check Disc Replacement 2 1/2"-4"

- The check modules are spring loaded.
- Insert a screwdriver through the hole in the linkage and let it rest in the arbors on the module.
- Remove the "E"-clip and pin connecting the linkage.
- The clapper will open with no tension.



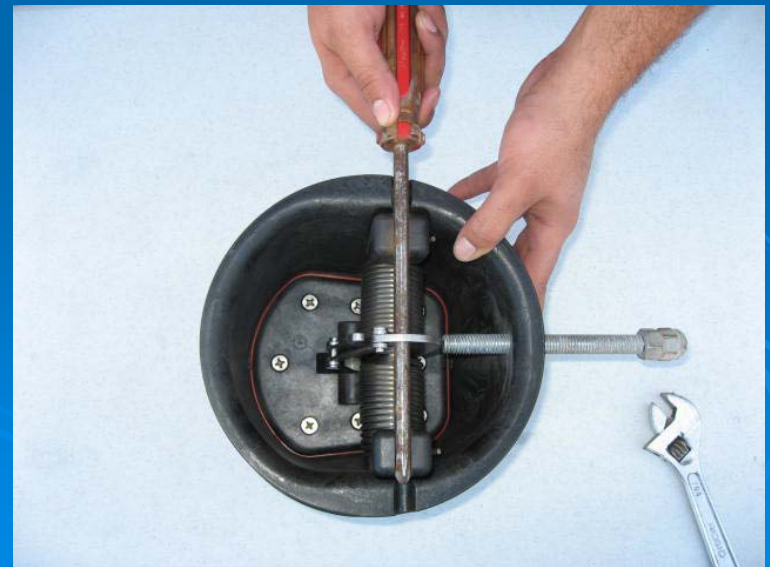
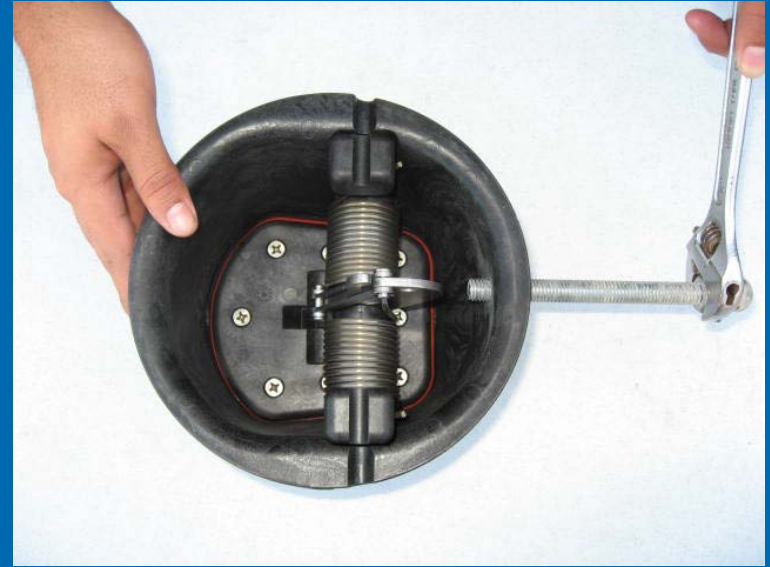
Check Disc Replacement 2 1/2"-4"

- Remove the screws on the disc retainer.
- Once disc is replaced, reassemble in reverse order.
- Do not remove the spring assembly.



Check Disc Replacement 6"-10"

- Locate the service hole on the side of the check module.
- Use a ½"-13 x 5 fully threaded bolt.
- Thread the bolt until the hole in the linkage is aligned with the notches in the spring arbors.
- Insert a long phillips screwdriver through the hole and arbors.



Check Disc Replacement 6"-10"

- Back the bolt out until the spring tension is transferred to the screwdriver.
- Remove retaining clip and pin from linkage.
- Spring assembly can be removed from the module.
- Remove screws from disc retainer.



Check Valve Reassembly Notes

- Reassemble check valves in reverse order.
- Apply lubricant to o-rings.



Relief Valve Removal

- Relief valve is threaded onto body and o-ring sealed.
- Disconnect sensing line hose.
- RV should be removed by hand.



RV Disassembly

- Remove the cover plate by removing the 4 allen screws.
- Remove the diaphragm.



RV Disassembly

- With the threaded end facing up, push up on the piston until the piston shaft with the attached E-clip is exposed.
- Remove the E-clip.



RV Disc Replacement

- The RV disc is molded onto the disc holder and must be replaced as one piece.



RV Diaphragm Replacement

- Form the diaphragm to fit over the disc holder.
- Reinstall the diaphragm into the body.



RV Reassembly Notes

- Reassemble relief valve in reverse order.
- Lubricate the RV body o-ring.

