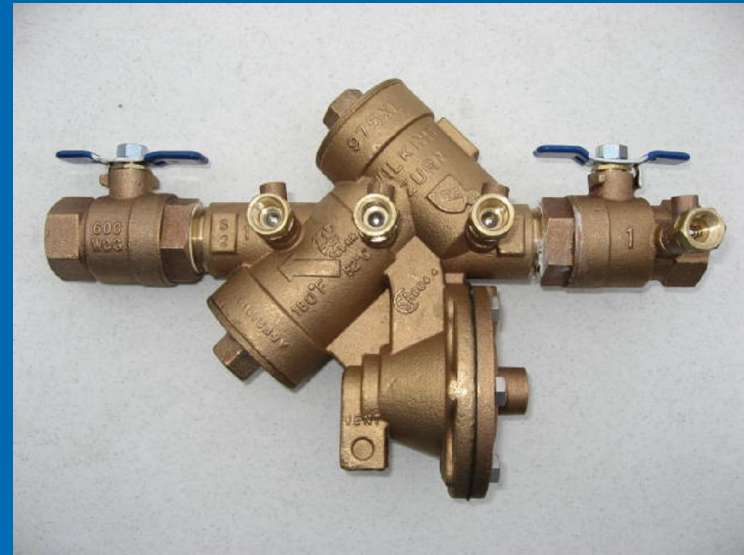


950, 950XL 975, 975XL 3/4"-2"



WILKINS
a **ZURN** company

ZURN

Modification Overview

- The 950 / 975 (original version)- had no replaceable check seats and buna-n check discs.
- The 950A / 975A- had bronze replaceable seats.
- The 950XL / 975XL- have plastic replaceable seats and silicone check discs.
- The 950XLT- is a top entry body style.

Check Cover Removal

- Cover is threaded into body and o-ring sealed.
- Cover is spring loaded.
- Loosen cover with wrench, then remove by hand while holding tightly against spring pressure.



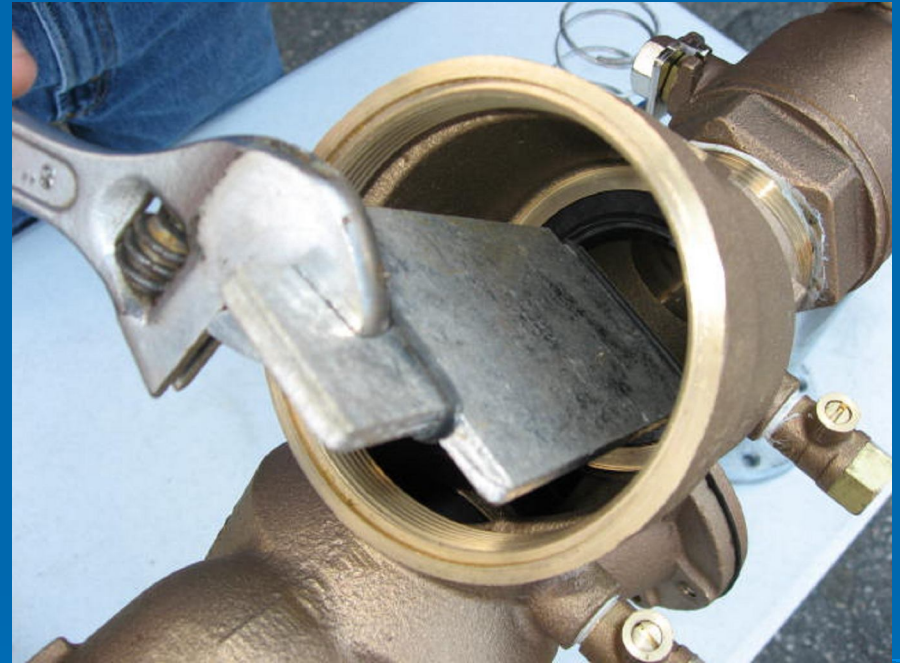
Check Valve Removal

- Poppet style check valve.
- The poppet and spring are free once the cover is removed.



Check Seat Removal

- Check seats are threaded into body and o-ring sealed.
- A “special tool” is needed for removal.



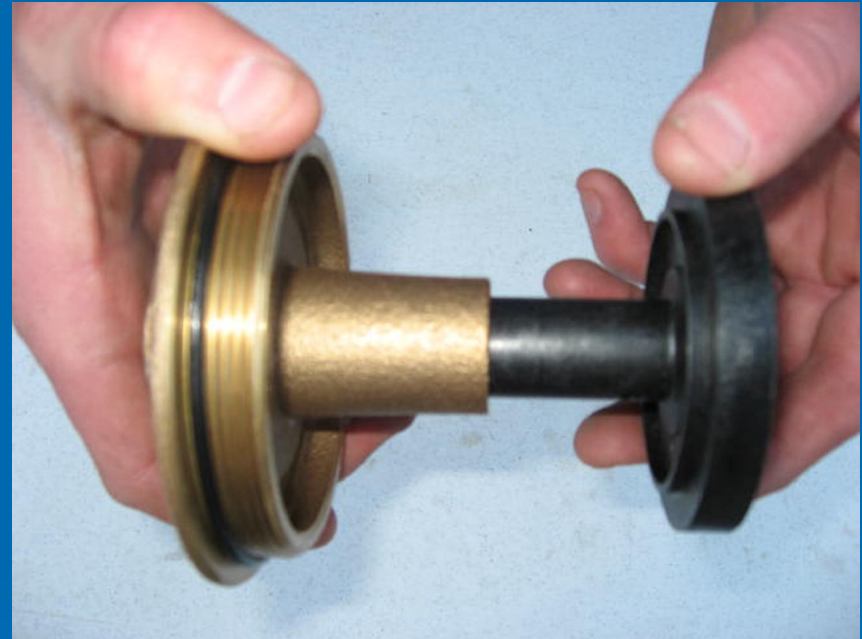
Check Disc Replacement

- Remove screw and disc washer from poppet.
- Reassemble in reverse order.



Check Valve Reassembly Notes

- Inspect and clean the guide bore on the cover.
- The stem must move freely in the guide bore.
- Reassemble in reverse order.



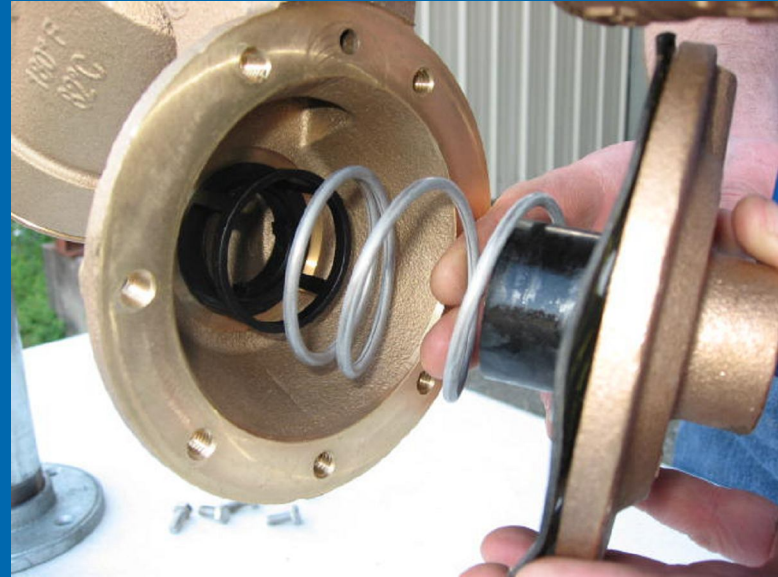
RV Cover Removal

- Cover is sealed by the diaphragm.
- Cover has a slight spring load.
- Hold cover firmly as the bolts are removed.



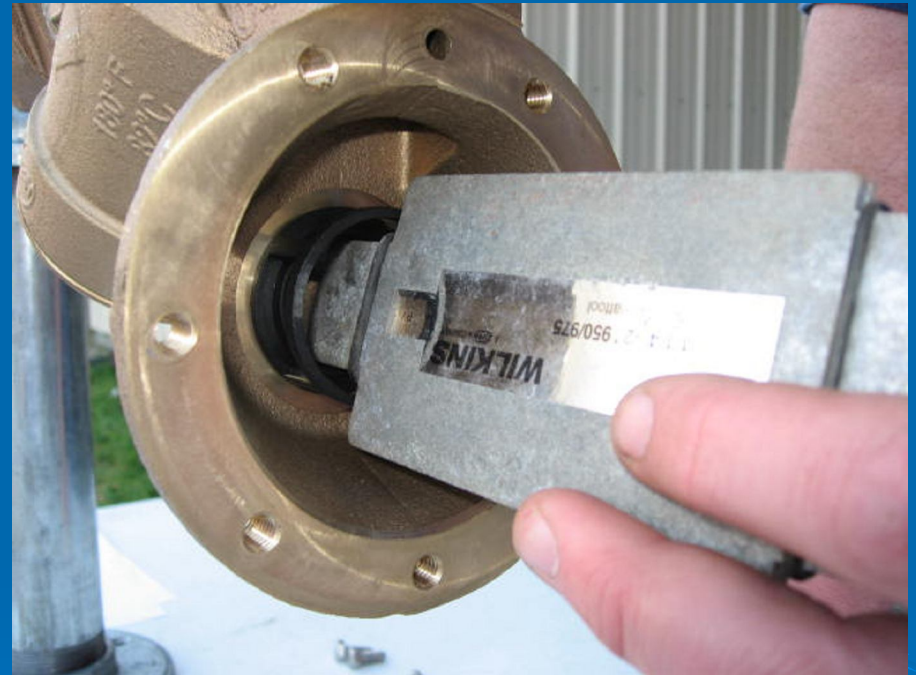
RV Stem Removal

- Gently pull on the diaphragm to remove the RV stem.
- The spring should fall out when the stem is removed.



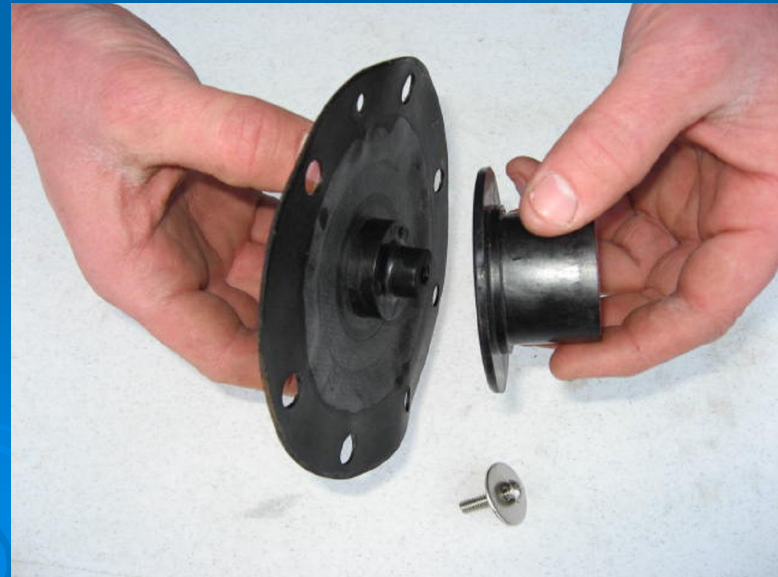
RV Seat Removal

- The seat is threaded into body and o-ring sealed.
- A “special tool” is needed to remove the RV seat.



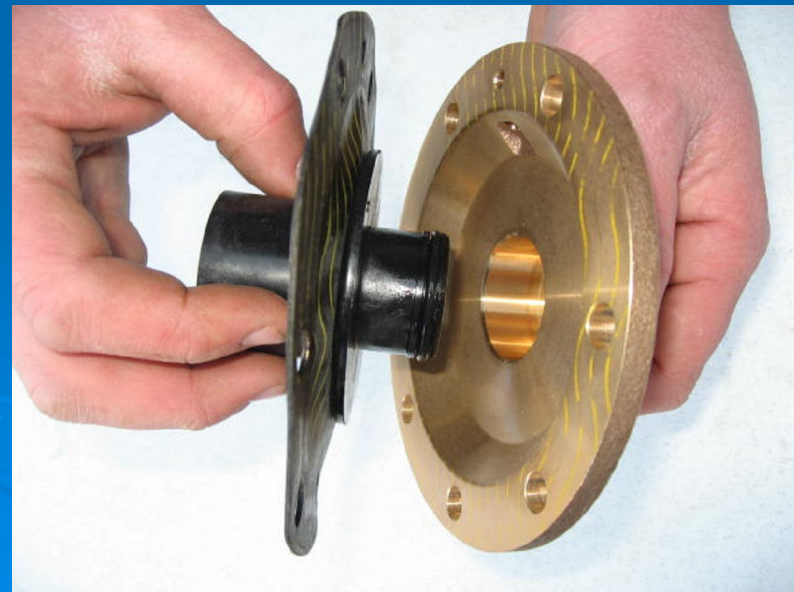
RV Stem Disassembly

- Remove the retaining screw.
- Pull the disc retainer and stem apart.



RV Rubber Replacement

- The diaphragm and seat disc are free once the stem is disassembled.
- Replace rubber in reverse order.
- Lubricate plunger o-ring on stem.



RV Reassembly Notes

- Reassemble the stem in reverse order.
- Position spring in body.
- Make sure diaphragm does not cover hole for sensing line.

