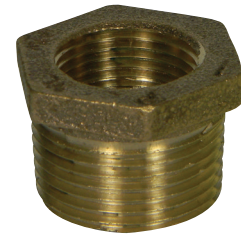


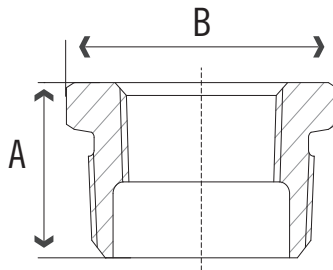
# SUBMITTAL DATA SHEET

No-Lead Threaded Brass Hex Bushings  
Hex Reducing Bushing

72206



A.Y. McDonald Mfg. Co. No-Lead Pipe Fittings are constructed from heavy duty brass and are rated for commercial, industrial and residential applications up to 125 WOG. Threads conform to ANSI B1.20.1 and fitting dimensions comply with ANSI B16.15.



## Dimensions

Model Number	Size	A	B	Hex	Lbs.
72206	1/4" x 1/8"	0.59	0.63	Out	.05
72206	3/8" x 1/8"	0.63	0.67	Out	.06
72206	3/8" x 1/4"	0.63	0.67	Out	.05
72206	1/2" x 1/8"	0.75	0.87	Out	.10
72206	1/2" x 1/4"	0.75	0.87	Out	.08
72206	1/2" x 3/8"	0.75	0.87	Out	.08
72206	3/4" x 1/8"	0.87	1.14	Out	.17
72206	3/4" x 1/4"	0.87	1.14	Out	.15
72206	3/4" x 3/8"	0.87	1.14	Out	.15
72206	3/4" x 1/2"	0.87	1.14	Out	.14
72206	1" x 1/4"	1.06	1.10	In	.24
72206	1" x 3/8"	1.06	1.10	In	.23
72206	1" x 1/2"	0.98	1.42	Out	.26
72206	1" x 3/4"	0.98	1.42	Out	.22
72206	1 1/4" x 1/2"	1.14	1.34	In	.35
72206	1 1/4" x 3/4"	1.06	1.77	Out	.41
72206	1 1/4" x 1"	1.06	1.77	Out	.33
72206	1 1/2" x 1/2"	1.18	1.34	In	.45
72206	1 1/2" x 3/4"	1.18	1.61	In	.59

Model Number	Size	A	B	Hex	Lbs.
72206	1 1/2" x 1"	1.14	2.01	Out	.54
72206	1 1/2" x 1 1/4"	1.14	2.01	Out	.43
72206	2" x 1/2"	1.26	1.34	In	.63
72206	2" x 3/4"	1.26	1.61	In	.77
72206	2" x 1"	1.26	1.97	In	.76
72206	2" x 1 1/4"	1.22	2.48	Out	.89
72206	2" x 1 1/2"	1.22	2.48	Out	.71
72206	2 1/2" x 1"	1.50	1.97	In	1.87
72206	2 1/2" x 1 1/2"	1.50	2.68	Out	1.32
72206	2 1/2" x 2"	1.42	2.99	Out	1.28
72206	3" x 1"	1.61	1.97	In	2.72
72206	3" x 1 1/2"	1.61	2.68	In	2.52
72206	3" x 2"	1.61	3.27	Out	2.61
72206	3" x 2 1/2"	1.54	3.86	Out	1.84
72206	4" x 3"	1.73	4.61	Out	4.13

## SUBMITTAL INFORMATION

### - Standards

AWWA C800, ASTM B584 UNS Alloy C89833  
(Casting), ASME B16.15 (Dimensions),  
ASME B1.20.1 (Threads)

- **Markings** - Manufacturer's logo, Size, Country of Origin, "NL"

- **Materials** - No-Lead Brass

- NSF / ANSI 61-4 & NSF / ANSI 372

NO-LEAD: The weighted average of the wetted surface of this no-lead product contacted by consumable water contains less than one quarter of one percent (0.25%) lead.



**A.Y. McDonald Mfg. Co.**  
4800 Chavenelle Rd  
Dubuque, IA 52002

**Toll Free: 1-800-292-2737**  
sales@aymcdonald.com  
aymcdonald.com

A.Y. McDonald considers the information on this assembly drawing correct when published. Item and option availability, including specifications, are subject to change without notice.

Submitted by: