

SUBMITTAL SHEET

JOB NAME		ITEM TAG
JOB LOCATION		PART NUMBER
CONTRACTOR	DATE	
ENGINEER APPROVAL	DATE	

STAINLESS STEEL INSERT STIFFENER

T-4500

304 Stainless steel construction
 Interlocking tab design resists crushing
 Extended length permits an even sealing surface for the fitting's gasket
 Tapered and fluted ends minimize insertion resistance and movement
 Designed for use in potable water installations



Designed for insertion into the inside diameter of CTS polyethylene plastic tubing

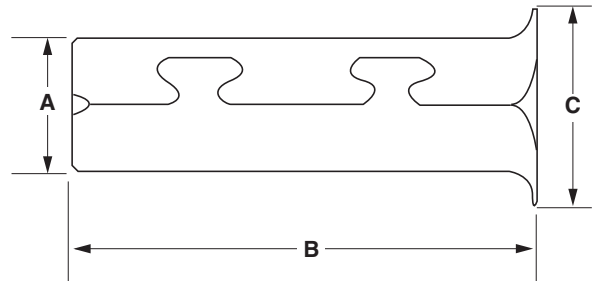
The 1-1/4" stiffener will also fit into the inside diameter of 1" IPS polyethylene plastic pipe

Recommended on all pack-joint and ring compression water service fitting installations onto polyethylene tubing or pipe

Prevents the collapse of the tubing or pipe end.

MATERIAL SPECIFICATION		
PART	MATERIAL	SPECIFICATIONS
Stiffener body	Stainless steel	AISI 304

DIMENSIONS – WEIGHTS			
Size	A	B	C
3/4"	0.65	2.42	0.82
1"	0.85	2.42	0.97
1-1/4"	1.03	2.35	1.26
1-1/2"	1.21	2.35	1.5
2"	1.58	2.35	1.98



T-4500